

Prevalence of problematic pharmaceutical opioid use in patients with chronic non-cancer pain: A systematic review and meta-analysis

Kyla H. Thomas¹  | Michael N. Dalili¹  | Hung-Yuan Cheng^{1,2} | Sarah Dawson¹ | Nick Donnelly³ | Julian P. T. Higgins¹  | Matthew Hickman¹ 

¹Population Health Sciences, Bristol Medical School, University of Bristol, Canynge Hall, Bristol, UK

²Translational Health Sciences, Bristol Medical School, University of Bristol, Musculoskeletal Research Unit, Learning and Research Building, Southmead Hospital, Bristol, UK

³Population Health Sciences, Bristol Medical School, University of Bristol, Oakfield House, Oakfield Grove, Bristol, UK

Correspondence

Dr Kyla Thomas, University of Bristol, Canynge Hall, 39 Whatley Road, Bristol, BS8 2PS.

Email: kyla.thomas@bristol.ac.uk

Funding information

National Institute for Health and Care Research, Grant/Award Number: PDF-2017-10-068; Department of Health

Abstract

Background and aims: Chronic non-cancer pain (CNCP) is one of the most common causes of disability globally. Opioid prescribing to treat CNCP remains widespread, despite limited evidence of long-term clinical benefit and evidence of harm such as problematic pharmaceutical opioid use (POU) and overdose. The study aimed to measure the prevalence of POU in CNCP patients treated with opioid analgesics.

Method: A comprehensive systematic literature review and meta-analysis was undertaken using MEDLINE, Embase and PsycINFO databases from inception to 27 January 2021. We included studies from all settings with participants aged ≥ 12 with non-cancer pain of ≥ 3 months duration, treated with opioid analgesics. We excluded case-control studies, as they cannot be used to generate prevalence estimates. POU was defined using four categories: dependence and opioid use disorder (D&OUD), signs and symptoms of D&OUD (S&S), aberrant behaviour (AB) and at risk of D&OUD. We used a random-effects multi-level meta-analytical model. We evaluated inconsistency using the I^2 statistic and explored heterogeneity using subgroup analyses and meta-regressions.

Results: A total of 148 studies were included with > 4.3 million participants; 1% of studies were classified as high risk of bias. The pooled prevalence was 9.3% [95% confidence interval (CI) = 5.7–14.8%; $I^2 = 99.9\%$] for D&OUD, 29.6% (95% CI = 22.1–38.3%, $I^2 = 99.3\%$) for S&S and 22% (95% CI = 17.4–27.3%, $I^2 = 99.8\%$) for AB. The prevalence of those at risk of D&OUD was 12.4% (95% CI = 4.3–30.7%, $I^2 = 99.6\%$). Prevalence was affected by study setting, study design and diagnostic tool. Due to the high heterogeneity, the findings should be interpreted with caution.

Conclusions: Problematic pharmaceutical opioid use appears to be common in chronic pain patients treated with opioid analgesics, with nearly one in 10 experiencing dependence and opioid use disorder, one in three showing signs and symptoms of dependence and opioid use disorder and one in five showing aberrant behaviour.

KEYWORDS

Meta-analysis, opioid analgesics, opioid dependence, opioid use disorder, prevalence, systematic review

This is an open access article under the terms of the [Creative Commons Attribution](https://creativecommons.org/licenses/by/4.0/) License, which permits use, distribution and reproduction in any medium, provided the original work is properly cited.

© 2024 The Author(s). *Addiction* published by John Wiley & Sons Ltd on behalf of Society for the Study of Addiction.

INTRODUCTION

Chronic non-cancer pain (CNCP), defined as pain which is not cancer-related and which lasts for longer than 3 months, is one of the most common causes of disability globally [1]. Population-based studies have reported that almost one in five US adults and as many as one in two UK adults suffer with the condition, which is often managed in primary care settings [2, 3]. Despite limited evidence of long-term clinical benefit of opioids for CNCP and guidelines advising against their use for many pain conditions [4, 5], opioid analgesics continue to be widely prescribed (almost 31% of CNCP patients are prescribed opioids world-wide) [6]. In UK primary care patients, large increases in opioid prescriptions were observed from 2006 to 2017, including a five-fold increase in codeine prescriptions and a 30-fold increase in oxycodone prescriptions [7]. Nearly 6 million adults in England were dispensed an opioid pain medicine from 2017 to 2018 [8].

Long-term opioid prescribing has been associated with many harms, including accidental and fatal prescription opioid overdose, problematic pharmaceutical opioid use (POU) and transition to illicit use [9–11]. In the United States, overdose deaths caused by prescription opioid analgesics, illicit opioids such as heroin and synthetic opioids such as fentanyl contribute to a ‘triple wave epidemic’ which has been described as an opioid ‘crisis’ and declared as a public health emergency by the US Department of Health and Human Services [12, 13]. There is increasing concern in the United Kingdom regarding opioid use due to the widespread prescribing of opioids for CNCP and the increase in opioid-related fatalities [14]. Nearly 50% of all fatal overdoses included opioids (illicit heroin and morphine), and opioid-related hospitalizations increased by almost 50% in the decade from 2008 to 2018 [14]. A study comparing opioid use and related adverse effects among 19 European countries and the United States found that the United Kingdom had the highest consumption of prescription opioids, with the highest rates of opioid-related hospital admissions and overdose deaths observed in Scotland [15]. As there is less evidence that widespread opioid prescribing in the United Kingdom has directly led to addiction or been implicated in deaths, caution has been expressed about referring to the United Kingdom situation as an opioid ‘epidemic’ [16]. However, the Scottish Government declared opioid-related deaths as a public health emergency in 2021 [17]. Clinicians and policymakers need to have accurate estimates showing that the prevalence of POU in CNCP as POU, including opioid dependence and opioid use disorder, is associated with significant harms to individuals, families and society and is a huge public health burden [18]. An appreciation of the size of the problem is important to motivate and implement prevention strategies. These may include preventing initial exposure to opioids by use of other pain management interventions, clinician and patient education regarding opioids and caution with initiating opioid prescribing, screening and monitoring for opioid use disorders to enable early identification of individuals with POU and use of effective OUD treatment such as medications and behavioural therapy [19]. Other preventive strategies may focus on harm reduction such as the use of naloxone to prevent overdose deaths [18, 19].

Previous systematic reviews and meta-analyses aimed at estimating the prevalence of POU in CNCP patients have significant limitations [10, 20–25]. A major limitation is the inconsistency in defining POU with the use of multiple definitions and terminology (such as misuse, abuse, addiction, dependence, opioid use disorder, problematic use and aberrant behaviour). Although some of these terms (dependence, opioid use disorder, abuse) have been precisely defined in publications such as the Diagnostic and Statistical Manual (DSM) of Mental Disorders and the International Classification of Diseases (ICD), there is variation in how POU is classified throughout DSM and ICD editions [26, 27]. Other POU terms (misuse, addiction, problematic use, aberrant behaviour) are more imprecisely defined. Additional limitations include the small number of studies included in reviews and the lack of robustness of data aggregation using disparate and inconsistent POU definitions. This has resulted in huge variation in the reported prevalence rates for POU in CNCP, with rates ranging from almost negligible to more than 80% [10, 20–25]. A more accurate estimate of prevalence of POU in CNCP patients is required, as this is important for clinicians and policymakers to gauge the true extent of the problem, inform prescribing decisions and take appropriate action, including developing and implementing effective interventions to prevent and manage POU. In this review we aim to more robustly estimate the prevalence of POU in CNCP patients treated with opioid analgesics.

METHODS

Search strategy and selection criteria

In this systematic review and meta-analysis, inclusion criteria were adults and children aged ≥ 12 years and patients with a diagnosis of CNCP (defined as non-cancer pain of 3 months’ duration or longer) who were prescribed or treated with prescription opioid analgesics. Studies in mostly or wholly paediatric populations (mean age < 18 years or small numbers of adult participants) or which focused solely upon use of illicit opioids and non-medical use of opioid analgesics were excluded. A comprehensive range of study designs was included as follows: cohort studies, longitudinal studies, cross-sectional studies (surveys), registry-based studies (e.g. claims data), incidence studies, retrospective chart reviews and other types of studies such as studies validating screening instruments and intervention studies which also measured POU, such as drug dependence/misuse or drug abuse liability. Case-control studies were excluded as the study design precludes the estimation of incidence or prevalence rates. Data were collected from a range of different settings, including primary care, pain clinics and other outpatient clinics, emergency departments, prescription databases, patient registries and toxicology databases. We included studies if they reported any POU, which was described in various ways in the literature, as follows: aberrant behaviour [28], abuse [29], addiction [30], substance dependence [29, 31, 32], misuse [30] and substance use disorder [33] (Supporting information, Table S1).

Electronic databases, including MEDLINE, Embase and PsycINFO via Ovid platform, were searched from their respective inception dates to 27 January 2021, with no language restrictions. Cited reference searches of selected and key articles were also searched to identify further papers for inclusion. The search

strategy is provided in the Supporting information, Appendix, pp. 4–11.

For each study, two independent reviewers carried out a title and abstract screen based on the inclusion and exclusion criteria. Reviewers met to discuss and resolve any discrepancies which arose

TABLE 1 Definitions of the four problematic pharmaceutical opioid use (POU) categories used in this analysis.

| | Definition |
|------------------------------------|--|
| Dependence and Opioid Use Disorder | <p>This category includes Dependence and Opioid Use Disorder (D&OUD) identified among study participants using Diagnostic and Statistical Manual of Mental Disorders (DSM) or International Classification of Disease (ICD) diagnostic criteria/codes for opioid dependence or opioid use disorder as follows:</p> <p>Substance Use Disorder/Opioid Use Disorder Please see Supporting information, Table S1 for the definition of substance use disorder in the Diagnostic and Statistical Manual of Mental Disorders, 5th edition (DSM-5) [33]</p> <p>Substance Dependence/Opioid Dependence There are multiple definitions of dependence which vary across different editions of the DSM and ICD as follows: DSM-III. A, Either pathological use or impairment in social or occupational functioning; B, either tolerance or withdrawal DSM-III-R. A, 3 of 9 symptoms; symptoms have equal weight; B, duration of symptoms for at least 1 month of symptoms occurred repeatedly over a longer period of time. Symptoms include:</p> <ul style="list-style-type: none"> • Taking substance in larger amount or over longer period than intended • Persistent desire of unsuccessful efforts to cut down or control use • Spending a great deal of time to get or use the substance, or recover from its after-effects • Frequent intoxication or withdrawal when expected to fulfil major obligations • Giving up activities for substance use • Continuing to use despite problems • Tolerance • Withdrawal • Using substance to relieve or avoid withdrawal symptoms <p>DSM-IV: Dependence is defined as the presence of three or more of the following criteria in a 12-month period: tolerance; withdrawal; increasing use over time; persistent or unsuccessful attempts to reduce use; preoccupation or excessive time spent on use or recovery from use; negative impact on social, occupational or recreational activity and continued use despite evidence of it causing psychological or physical problems</p> <p>ICD-10: Dependence is defined as a cluster of physiological, behavioural and cognitive phenomena that develop after repeated substance use and that typically include a strong desire to take the drug; difficulties in controlling its use; persisting in its use despite harmful consequences; increased tolerance and sometimes a physical withdrawal state</p> <p>ICD-11: Please see Supporting information, Table S1 for the definition of substance/opioid dependence using the ICD-11 diagnostic criteria [32]</p> |
| Signs and symptoms of D&OUD | <p>In this category, multiple behaviours indicative of D&OUD are shown by study participants without specific use of DSM or ICD diagnostic codes to identify D&OUD. It is differentiated from the category of aberrant behaviour (see below) by the clear presence of behaviours such as craving, tolerance, withdrawal or a loss of control over use (for example continued use despite psychological or physical harm or use which takes priority over usual obligations)</p> <p>Diagnostic tools or methods of assessment included clinical judgement, self-assessment with questionnaires, structured interviews (including adapted questions of the World Health Organization's Composite International Diagnostic Interview (WHO CIDI), use of the abuse index, Current Opioid Misuse Measure (COMM), Portenoy's criteria, Prescribed Opioids Difficulties Scale (PODS), Prescription Opioid Misuse and Abuse Questionnaire (POMAQ), Prescription Drug Use Questionnaire (PDUQ), Drug Misuse Index (DMI).</p> |
| Aberrant behaviour | <p>In this category, study participants show one or more examples of aberrant behaviour, such as inappropriate drug-seeking behaviour, seeking early refills, repeated dose escalations, frequently lost prescriptions, seeking drugs from multiple providers and positive or inappropriate urinalysis/urine drug screens</p> <p>These behaviours do not meet threshold for dependence or opioid use disorder (for example there is the absence of craving, tolerance, withdrawal, ongoing use despite physical harm or exacerbation of psychological problems)</p> <p>Diagnostic tools or methods of assessment included clinical judgement, structured interview, self-report, UDT, Pain Medication Questionnaire (PMQ), Aberrant Drug Behaviour Index (ADBI), Chabal criteria, insurance claims, questionnaires, Prescription Opioid Misuse Index (POMI), Screener and Opioid Assessment for Patients with Pain (SOAPP) and the revised version (SOAPP- R), dose escalation, opioid misuse score.</p> |
| At risk of D&OUD | <p>In this category study participants exhibit characteristics which may increase their risk of developing opioid dependence or opioid use disorder in the future, however, they do not show aberrant behaviour or meet criteria for dependence or opioid use disorder</p> <p>Diagnostic tools included clinical judgement, structured interviews and questionnaires including the Opioid Risk Tool (ORT).</p> |

at team meetings. A full text review of the studies retained at this stage was undertaken by two independent reviewers.

The protocol for this study is registered in the PROSPERO database (CRD42019132364). The systematic review is reported in accordance with the Preferred Reporting Items for Systematic reviews and Meta-Analyses (PRISMA) guidelines [34].

Data extraction

Data from the included studies were extracted by the team of reviewers onto a standardized data extraction form. All extracted data

were checked by an independent reviewer to ensure the accuracy of data extraction. Queries were noted, discussed and resolved at team meetings.

The following data were extracted: title, authors, year of publication, study design, study location, setting, overall sample size, population studied, type and duration of CNCP, sample demographics, treatment duration, type of prescribed opioids, authors' classification of POU, measurement or diagnostic tools and methods of assessment used to establish POU (see Lawrence *et al.* (2017) for a detailed review of validated measurement tools [35] and the next section for definitions and categorization), prevalence rate of problematic opioid use and the numerators and denominators used to calculate

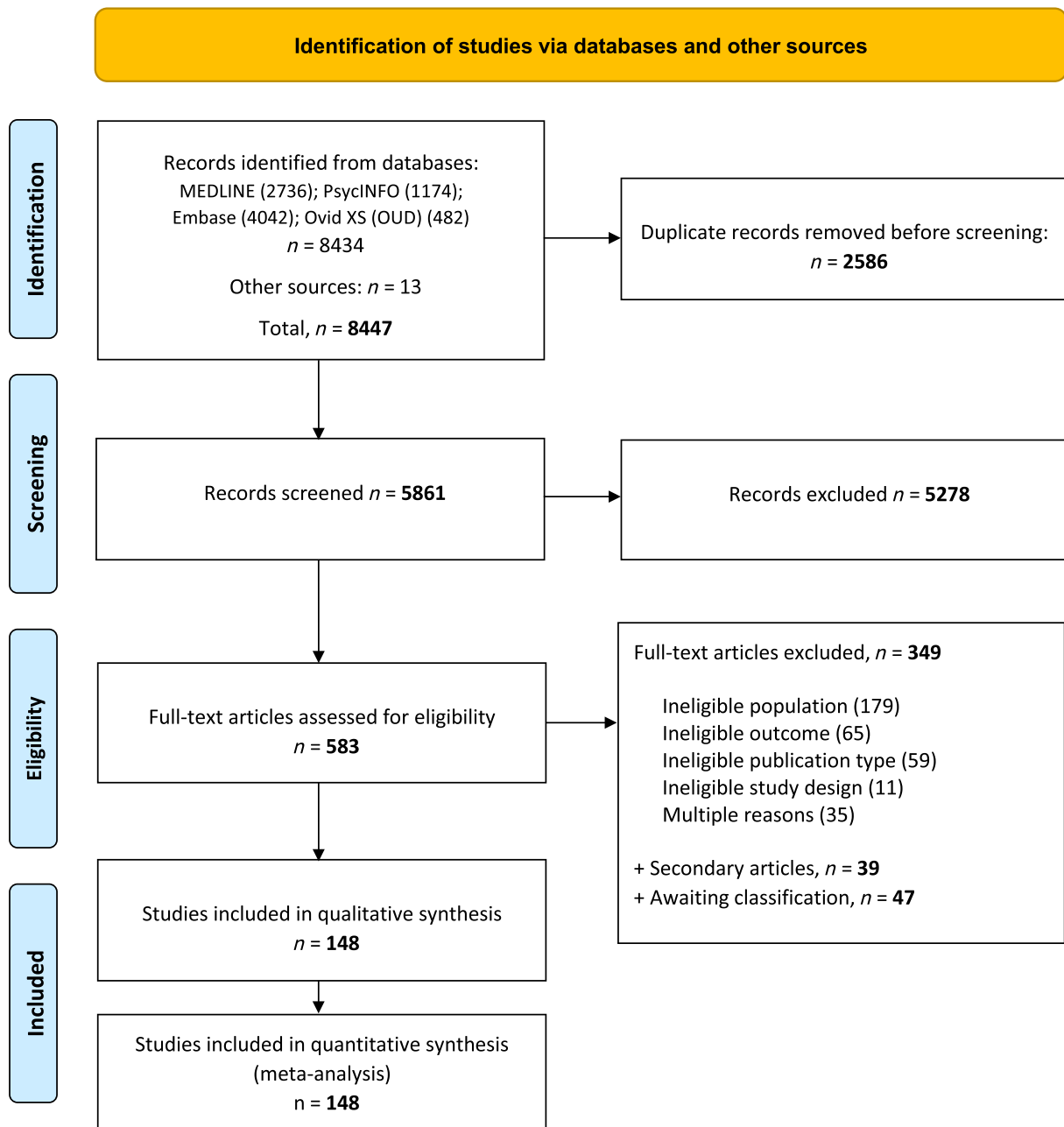


FIGURE 1 Preferred Reporting Items for Systematic reviews and Meta-analyses (PRISMA) flow diagram for study records.

prevalence estimates. We contacted authors of studies for further clarification or to obtain non-published data.

We extracted the definitions of POU reported by the study authors. We used similar methodology to Vowles *et al.* (2015), and extracted and recorded prevalence rates for POU to one decimal place [25]. Where a study reported multiple rates for a single POU outcome we recorded all estimates. If prevalence rates were not explicitly reported within the manuscripts, we calculated the rates manually.

Data analysis

We defined four categories of POU as follows: (i) dependence and opioid use disorder (D&OUD) identified using diagnostic codes, (ii) signs and symptoms of D&OUD, (iii) aberrant behaviour and (iv) at risk of D&OUD (Table 1). Four reviewers were involved in categorizing POU outcomes. Reviewers dealt with disagreements regarding categorization of POU outcomes via multiple discussions until consensus was reached. Details of the definitions used by study authors for each outcome and their subsequent categorizations are provided in the Supporting information, Appendix, pp. 31–86.

We assessed risk of bias using 10 items addressing four domains of bias (selection bias, non-response bias, measurement

bias and analysis bias) by Hoy *et al.* (2012) [36], plus a summary risk of bias assessment (the rater’s subjective judgement based on responses to the preceding items). Items were scored as ‘yes’ (low risk) or ‘no’ (high risk) and the summary risk of bias was assessed as ‘low’, ‘moderate’ or ‘high’ based on whether further research was very unlikely (low), likely (moderate) or very likely (high) to have an important impact on our confidence in the estimate and to change it.

As some studies reported multiple prevalence results for the same outcome, we followed a strategy by López-López *et al.* (2018) using a convergent and integrative approach to meta-analysis [37]. Specifically, we used a multi-level meta-analytical model described by Konstantopoulos (2011) [38], which included random effects at both study and measurement levels. As some studies reported multiple prevalence results within the same pools of participants using different measurement tools or criteria, we assumed prevalence estimates within studies are correlated and incorporated this within the model. Prevalence results were logit-transformed before applying the synthesis model, and then back-transformed and reported in percentages for ease of interpretation. We applied cluster-robust inference methods to minimize potential misspecification of the model [39, 40]. The I^2 statistic was used to quantify inconsistency [41]. We calculated the overall I^2 statistic using the between- and within-cluster heterogeneities proposed by Nakagawa & Santos (2012) [42]. To aid the

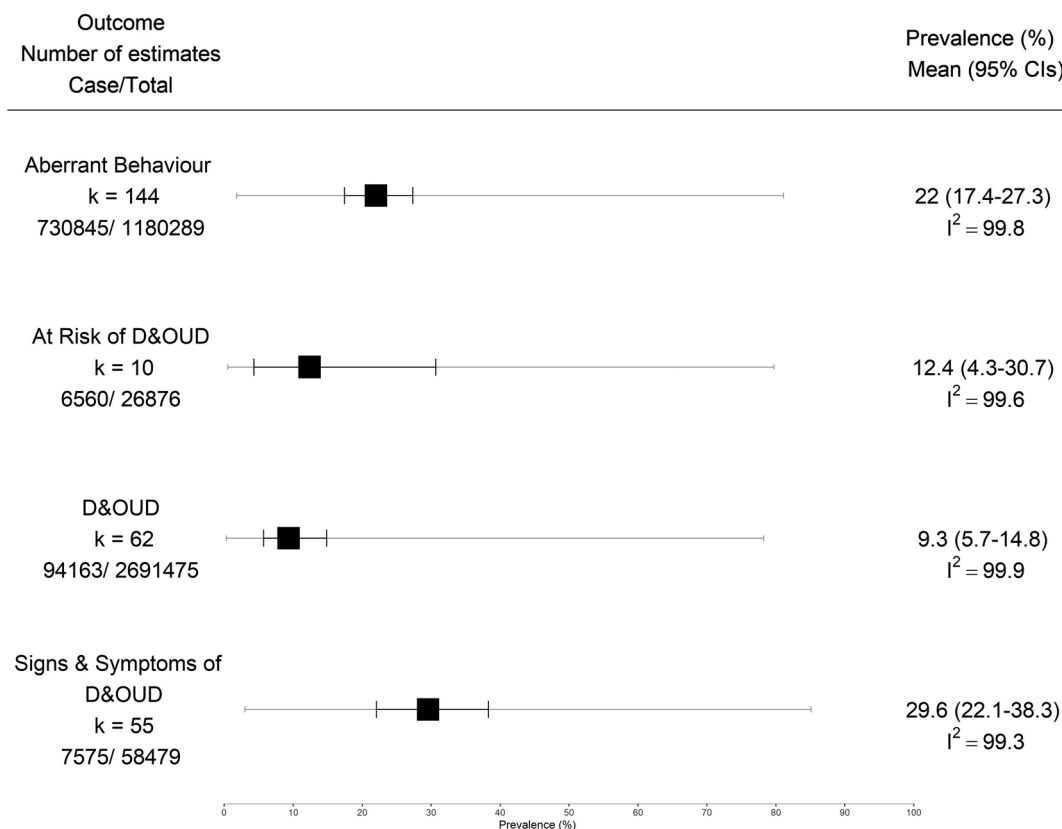


FIGURE 2 Prevalence of all problematic opioid use outcomes. Squares represent mean pooled prevalence estimates and error bars represent 95% confidence intervals. Grey bar across the square and error bars shows 95% prediction intervals.

Forest plot: Dependence & Opioid Use Disorder

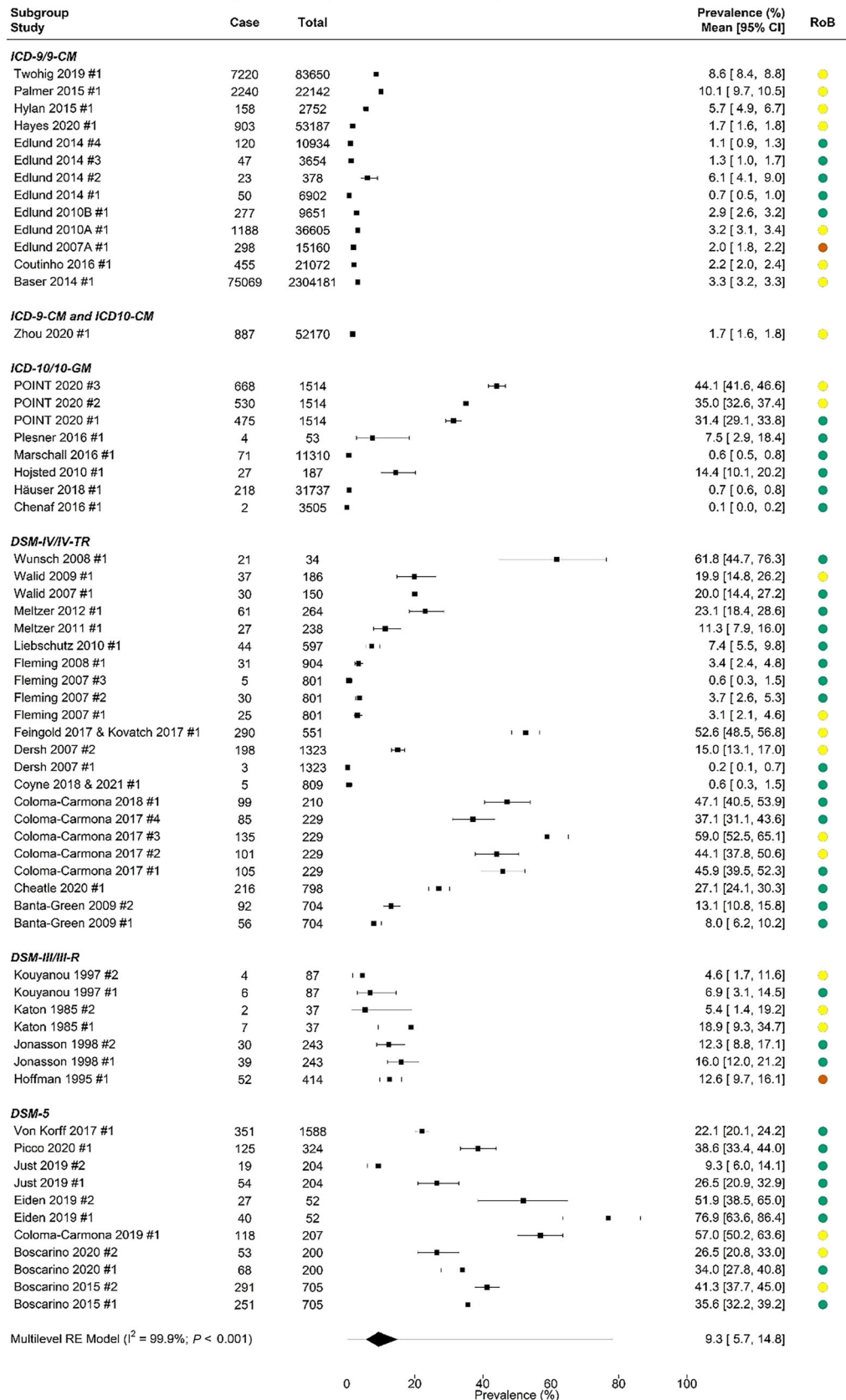


FIGURE 3 Forest plot of Dependence and Opioid Use Disorder. Squares represent mean prevalence estimates and error bars represent 95% confidence intervals of each result from studies. Diamond shows the mean pooled estimate and the 95% confidence intervals. Grey bar across the diamond shows 95% prediction intervals. Risk of bias (ROB); red: high, yellow: moderate, green: low.

Forest plot: Signs and Symptoms

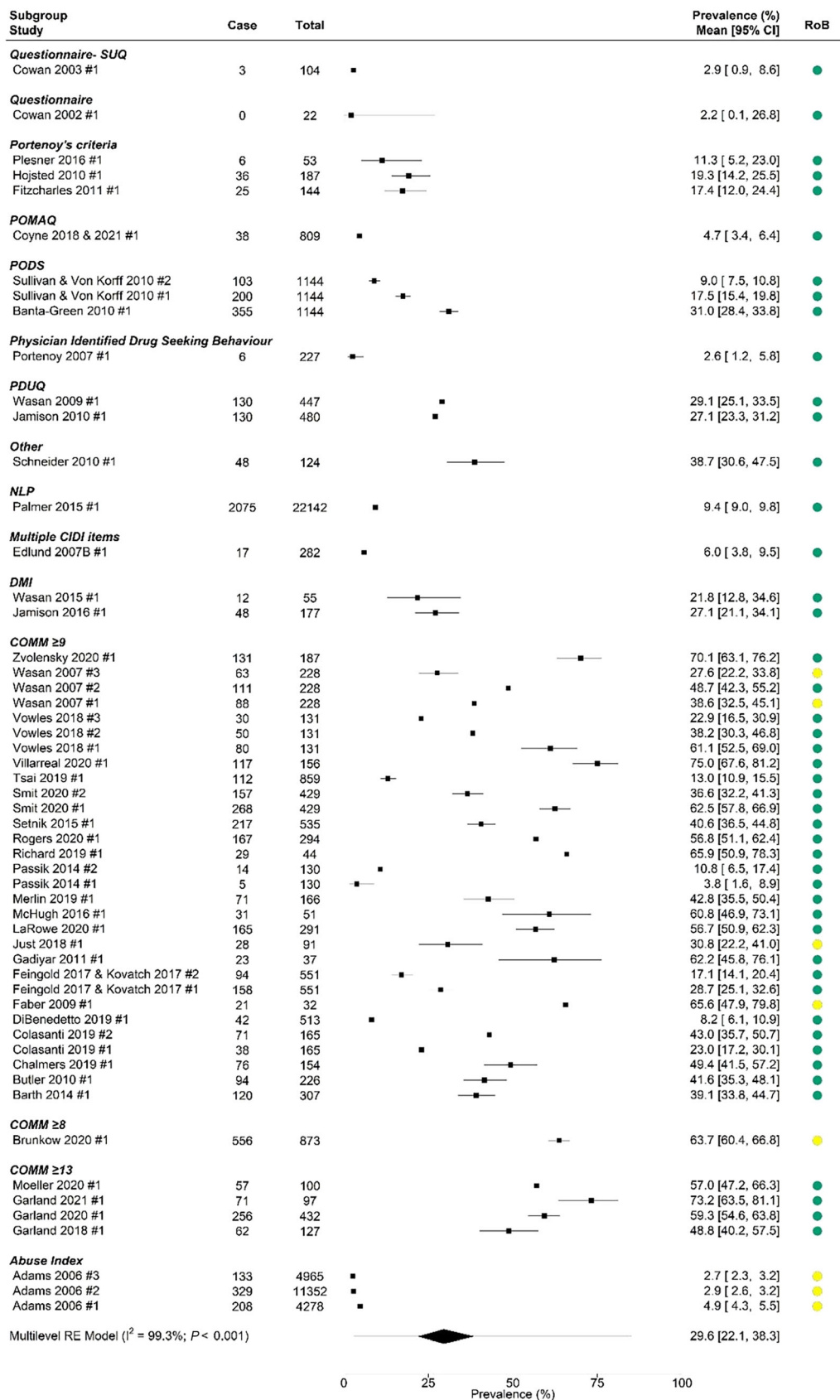


FIGURE 4 Forest plot of signs and symptoms of Dependence and Opioid Use Disorder. Squares represent mean prevalence estimates and error bars represent 95% confidence intervals of each result from studies. Diamond shows the mean pooled estimate and the 95% confidence intervals. Grey bar across the diamond shows 95% prediction intervals. Risk of bias (ROB); red: high, yellow: moderate, green: low.

interpretation of heterogeneity we also present prediction intervals [43] and between-study variances in the forest plots. All models were fitted using restricted maximum likelihood estimation. The detailed statistical model is presented in the Supporting information, Appendix, p. 30.

We carried out subgroup analyses and evaluated potential sources of heterogeneity between studies by adding potential moderators as fixed effects to the multi-level model. We used meta-regression models to examine the influence of potential moderators (mean age, sex (proportion female), ethnicity (proportion white), publication year, study design (cohort, cross-sectional, interventional, retrospective chart review, other), study location (Asia, Australasia, Europe, Middle East, North America, multiple), setting (pain clinic, primary care, registry/database, secondary and tertiary care, emergency department, mixed setting), duration of pain [short (< 1 year), medium (1–4 years), long (> 4 years)], diagnostic criteria/method of assessment and overall risk of bias (low, moderate, high) on the size of the mean prevalence. We also analysed subordinate components of the risk of bias according to Migliavaca *et al.* (2020) in binary (yes/no) categories as follows: appropriate definition of condition, appropriate sampling, appropriate measurements, appropriate response rate, appropriate follow-up length, appropriate data collection and appropriate statistics [44].

Sensitivity analyses were carried out by altering the assumption of interdependency between prevalence results within studies and using Freeman–Tukey double arcsine transformation. Sensitivity analyses were not conducted on risk of bias due to the very low number of studies rated as having high risk of bias. All analyses were carried out in R statistical computing software, version 4.3.0 using the *metafor*, *clubSandwich* and *ggplot2* packages [45–47].

RESULTS

Figure 1 provides the flow-chart for our screening process. We identified 8447 records from database searching and other sources. A total of 5861 records were screened for inclusion; 5278 were excluded at title and abstract stage (due to reasons such as wrong study design—treatment studies, acute postoperative studies, opinion pieces, general surveys, single case reports), with 583 reviewed at full text. A total of 148 studies (reported in 148 publications) were included in the final review [48–195], in the Supporting information, Appendix, pp. 12–21. Four publications reported data for more than one study [89, 134, 162, 173], while data from three studies were reported in multiple publications [83, 84, 96, 129, 137, 139, 140]. Our searches also retrieved multiple publications associated with the Pain and Opioids in Treatment (POINT) cohort study [26, 27, 65, 196–200]. For the POINT study, we used data obtained directly from study authors in our analyses.

Study characteristics are reported by study in the Supporting information, Appendix, Table S2. Most studies had a cohort or cross-sectional study design (66 and 57 studies, respectively). There were six interventional studies. Most studies (115/148) were conducted in

the United States, with 24 in Europe (including five in the United Kingdom, three in France and four each for Spain and Germany), two in Australia and seven in other countries. Fifty-four studies were carried out in pain clinics, 28 in primary care and there were 23 registry/database studies.

Overall, 4 301 910 participants were included, with study size ranging from 15 to 2 304 181. There was variability in the reporting of demographic data, with 75% reporting mean or median data for age, 93% reporting sex and 51% reporting participants' ethnicity; 69% of studies provided information on the type of pain, 76% on the duration of pain and 56% on specific prescription opioids used.

One hundred and nine (74%) studies were classified as low risk of bias, with 25% considered to be at moderate risk of bias and 1% classified as high risk of bias. Most studies classified as moderate or high risk of bias did not have a sample representative of the national population, did not use an acceptable case definition, did not use a study instrument shown to have validity and reliability and did not report an appropriate length of the prevalence period for the parameter of interest (duration of chronic pain).

The frequency tables of reported prevalence results and studies are presented in the Supporting information, Appendix, p. 87, Tables S7–S10. A summary forest plot of the prevalence estimates by outcome using the logit transformation is shown in Figure 2. Forest plots for each POU outcome by study and overall risk of bias assessment and including prediction intervals are reported in Figures 3–6.

Forty-three studies reported D&OUD (62 prevalence estimates, sample size $n = 2\,691\,475$). The pooled prevalence of D&OUD was 9.3% [95% confidence interval (CI) = 5.7–14.8; I^2 99.9%; Figure 3]. Diagnostic tool (method of assessment) was a strong predictor of prevalence (Supporting information, Appendix, pp. 99–100, Table S19). Subgroup analyses by ICD or DSM diagnostic tool (Supporting information, Appendix, p. 108, Figure S14) showed the lowest DOUD prevalence rates when ICD-9 and ICD-10 codes were used; these were 3% (95% CI = 1.7–5.3; I^2 97.2%) and 2.4% (95% CI = 0.2–26.3; I^2 99.7%), respectively. Higher prevalence rates were observed using DSM-III (9.9%, 95% CI = 4.6–19.8; I^2 94.9%), DSM-IV (13.1%, 95% CI = 5.5–28.2; I^2 99.4%) and DSM-5 (36.7%, 95% CI = 21.0–55.9; I^2 97.6%). In addition to the method of assessment used, we found significant differences in the prevalence of DOUD according to study setting, study design and two components of the risk of bias assessment—appropriate response rate and appropriate data collection. The highest prevalence rates were seen in pain clinics (29.2%, 95% CI = 13.1–53.0; I^2 98.9%) and mixed settings (31.0%, 95% CI = 7.2–72.4; I^2 98.4%) and the lowest observed in registry/database studies (1.9%, 95% CI = 1.0–3.5%; I^2 98.8%). Studies which were assessed as not having an appropriate response rate on the risk of bias tool reported higher prevalence than those with an appropriate response rate (Supporting information, Appendix, p. 109, Figure S15); the converse was seen for those studies which reported appropriate data collection versus those that did not (Supporting information, Appendix, p. 110, Figure S16).

Forty-four studies reported signs and symptoms of D&OUD (55 prevalence estimates, sample size $n = 58\,479$). The pooled

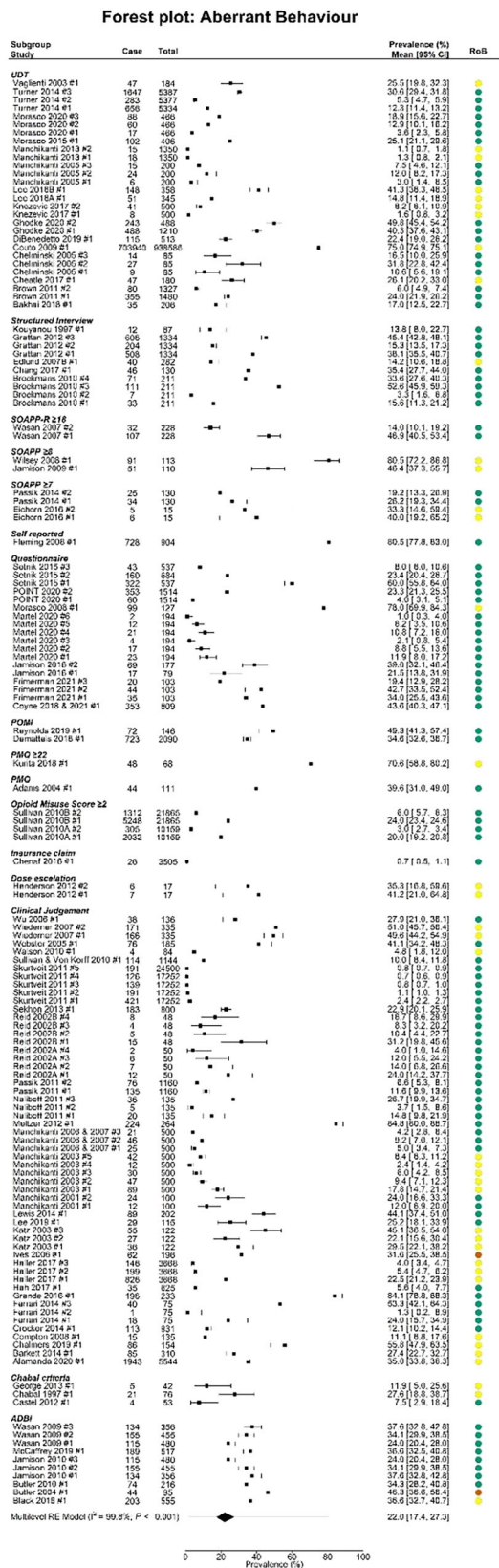


FIGURE 5 Forest plot of aberrant behaviour. Squares represent mean prevalence estimates and error bars represent 95% confidence intervals of each result from studies. Diamond shows the mean pooled estimate and the 95% confidence intervals. Grey bar across the diamond shows 95% prediction intervals. Risk of bias (ROB); red: high, yellow: moderate, green: low.

prevalence of signs and symptoms of D&OUD was 29.6% (95% CI = 22.1–38.3; I^2 99.3%; Figure 4). The method of assessment or diagnostic tool used strongly influenced prevalence rates; the highest rates were seen with the three different cut-offs using the COMM tool (Supporting information, Appendix, p. 113, Figure S20). Study setting, publication year and the appropriate measurements component of the risk of bias assessment also contributed significantly to the observed heterogeneity in the prevalence of signs and symptoms of DOUD (Supporting information, Appendix, Table S20). The highest rates were seen in on-line settings, emergency departments and in primary care (Supporting information, Appendix, p. 112, Figure S19). Low rates were observed in other settings and where the setting was not specified. Studies with higher scores on the risk of bias assessment related to appropriate measurements reported higher prevalence estimates than those with a lower score (Supporting information, Appendix, p. 114, Figure S21).

Seventy-nine studies reported aberrant behaviour (144 prevalence estimates, $n = 1\ 180\ 289$). The pooled prevalence of aberrant behaviour was 22% (95% CI = 17.4–27.3; I^2 99.8%; Figure 4). We found some evidence of a significant difference in prevalence of aberrant behaviour according to study design and diagnostic tool (Supporting information, Appendix, pp. 103–104, Table S21), albeit weaker than for DOUD and signs and symptoms of DOUD. The highest rates were reported in cross-sectional studies (Supporting information, Appendix, p. 115, Figure S22) and those using the Screener and Opioid Assessment for Patients with Pain (SOAPP) tool (cut-off ≥ 7) and the Pain Medication Questionnaire (PMQ) (≥ 22), in the Supporting information, Appendix, p. 116, Figure S23. There was also some evidence for a significant effect of two components of the risk of bias assessment (Supporting information, Appendix, pp. 117–118, Figures S24 and S25), appropriate sampling (highest prevalence reported for those studies which scored the lowest on the checklist, in the Supporting information, Appendix, Figure S24) and appropriate follow-up length (highest prevalence for those studies which did not have an appropriate follow-up length, in the Supporting information, Appendix, Figure S25).

Eight studies assessed the prevalence for at-risk of D&OUD (10 prevalence, estimates, $n = 26\ 876$). The pooled prevalence was 12.4% (95% CI = 4.3–30.7; I^2 99.6%; Figure 5). We did not find any evidence for a significant difference in the prevalence of at-risk of D&OUD for any of the potential moderators investigated (Supporting information, Appendix, pp. 105–106, Table S22).

Sensitivity analyses using different transformation models (Supporting information, Appendix, pp. 93–94, Tables S15–S18) showed an impact of these on the results of the meta-analyses. As the differences in the prevalence estimates were minimal across the two transformation methods, the differences are likely to be explained by differences in the sampling variances for the different transformations, leading to different heterogeneity variance estimates and therefore different study weights in the meta-analysis (Supporting information, Appendix, pp. 95–96, Figures S5–S8). In contrast, the interdependency assumption had little impact on the pooled prevalence estimates (Supporting information, Appendix, pp. 97–98, Figures S9–S12).

DISCUSSION

Principal findings

The prevalence of POU is high with almost one in 10 people identified as D&OUD using diagnostic criteria or at risk of D&OUD, one in three showing S&S of D&OUD and one in five showing aberrant behaviour. However, there was considerable heterogeneity between studies across outcomes and variation in relation to classification and measurement of outcomes. Several moderators, including diagnostic tool (or method of assessment), study setting and specific items on the risk of bias tool, were found to be associated with the pooled prevalence estimates. The evidence was predominantly from North American studies and high-income countries, and we did not detect consistent differences by study location.

Strengths and weaknesses

A major strength of this study is the comprehensive search for studies, which resulted in the inclusion of 148 studies and more than 4.3 million patients in the final review. The largest previous review, by Vowles *et al.* (2015) [25], included 38 studies and a little over 1 million participants [10, 20–25]. There was huge variability in studies reporting POU due to the interchangeable use of terms such as abuse, dependence, addiction and misuse by study authors and the lack of

consistency in the definitions of POU identified using the same measurement tool. Unlike Vowles *et al.* (2015), who re-categorized study outcomes as misuse, abuse and addiction, most of the previous reviews summarized results based on study authors' definitions. Therefore, the second main strength of this study is our attempt to address this variability by categorizing POU more robustly. Thirdly, we carried out subgroup analyses and meta-regression for multiple factors, including the measurement or diagnostic tool used to identify POU, to explore some of the observed heterogeneity.

There are several limitations. A single study (Baser *et al.*, 2014) [56], contributed to 54% of the entire sample. Few studies were reported from lower- and middle-income countries, with no data available from Africa, South America or the Caribbean. This may explain the lack of geographical differences found among the studies. Another limitation is the lack of clear evidence on the generalizability of the prevalence estimates and the extent to which they can be extrapolated to other populations. Fourthly, although we carried out random-effects meta-analyses to capture uncertainty resulting from heterogeneity among studies, our pooled analyses showed extremely high inconsistency (shown by I^2) and heterogeneity (shown by prediction intervals within the forest plots). This variability among studies may limit the generalizability and reliability of the findings and further underscores the need for caution when interpreting the results. The high levels of inconsistency persisted within subgroups even when the same method of assessment was used. Our exploration of heterogeneity using meta-regression and subgroup analyses found significant evidence that moderators such as study

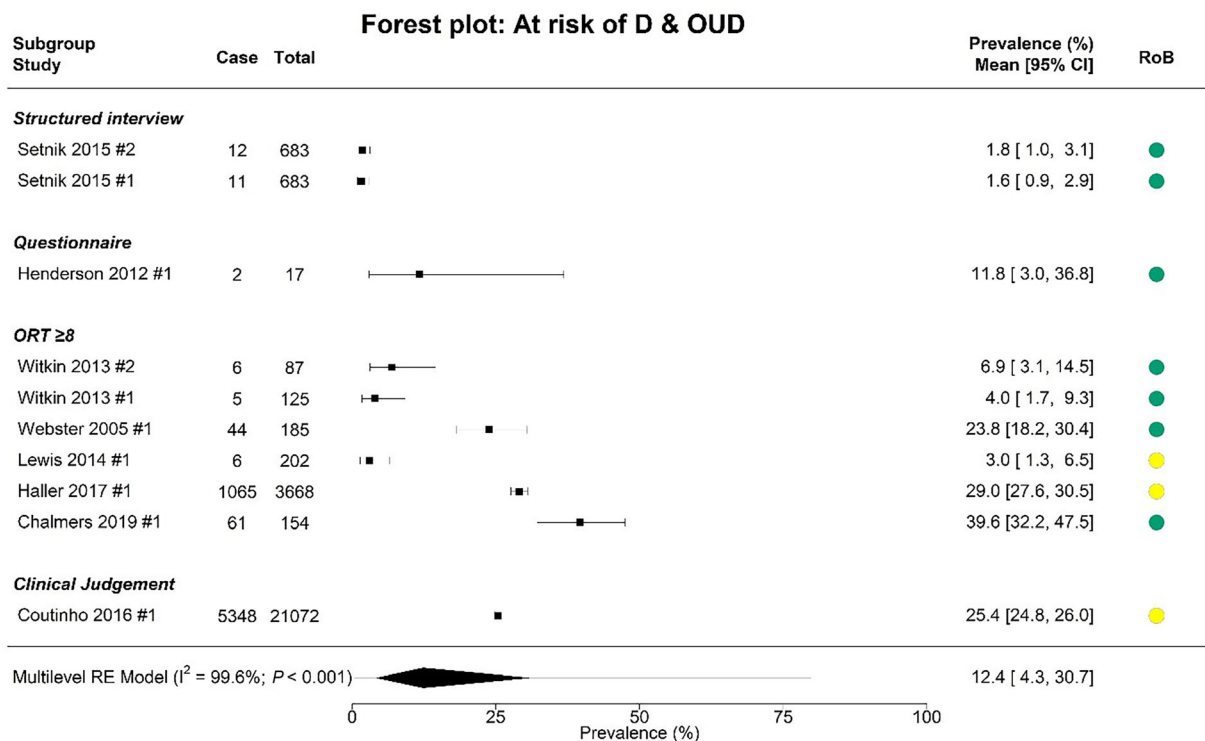


FIGURE 6 Forest plot of at risk of Dependence and Opioid Use Disorder (D&OUD). Squares represent mean prevalence estimates and error bars represent 95% confidence intervals of each result from studies. Diamond shows the mean pooled estimate and the 95% confidence intervals. Grey bar across the diamond shows 95% prediction intervals. Risk of bias (ROB); red: high, yellow: moderate, green: low.

TABLE 2 Comparison of findings throughout systematic reviews of studies reporting problematic opioid use outcomes in chronic non-cancer pain patients.

| | Current study | Noble <i>et al.</i> 2008 | Morasco <i>et al.</i> 2011 | Minozzi <i>et al.</i> 2013 | Chou <i>et al.</i> 2015 | Vowles <i>et al.</i> 2015 | Higgins <i>et al.</i> 2018 |
|-------------------------|--|---|---------------------------------------|--|--|--|--|
| Population | Patients with chronic non-cancer pain prescribed opioids | Patients with chronic non-cancer pain treated with opioids for ≥ 6 months | Patients with chronic non-cancer pain | Patients receiving treatment with strong opioids for acute or chronic pain due to any physical condition | Patients with chronic pain receiving long-term opioid therapy ≥ 3 months | Patients with chronic non-cancer pain using opioids orally | Patients with pain who were exposed to opioid analgesic therapy |
| Abuse | Not reported | 0.43%. Two studies included. Abuse not clearly defined, based on study authors' reporting. Lack of clarity and inconsistency of reporting of abuse | Not reported | Not reported | 0.6–8%. Varied measurement of outcome. Three studies | 8%. Varied measurement of outcome. One study | 4.7% (range = 0.2–34.2%)*. Clinical diagnosis of opioid dependence or abuse disorder, established in studies by the use of DSM or ICD criteria or clinician assessment. 12 studies |
| Addiction | Not reported | 0.042%. Seven studies included. Addiction not clearly defined, based on study authors' reporting. Lack of clarity and inconsistency in reporting of addiction | Not reported | Not reported | 2–14%. Varied measurement of outcome. Seven studies | 8–12%. (95% CI = 3–17%). Varied measurement. 12 studies | Not reported |
| Dependence [†] | 9.3%. D&OUD defined using diagnostic codes (95% CI = 5.7–14.8%) 29.6%. S&S of D&OUD (95% CI = 22.1–38.3%) | Not reported | Not reported | Median = 4.5% (range = 0–31%) Median = 0.5% (range = 0–24%)* 17 studies included, 15 studies included only patients with non-cancer pain. 14 studies included only adult patients with chronic pain. DSM-IV or ICD-10 categories used to define dependence | 3–26%. Varied measurement of outcome. Three studies | Not reported | 4.7% (range = 0.2–34.2%)* Clinical diagnosis of opioid dependence or abuse disorder, established in studies by the use of DSM or ICD criteria or clinician assessment. 12 studies |

(Continues)

TABLE 2 (Continued)

| | Current study | Noble <i>et al.</i> 2008 | Morasco <i>et al.</i> 2011 | Minozzi <i>et al.</i> 2013 | Chou <i>et al.</i> 2015 | Vowles <i>et al.</i> 2015 | Higgins <i>et al.</i> 2018 |
|-------------------------------------|--|-----------------------------|---|-------------------------------|---|---|--|
| Substance use disorder [†] | 9.3%- D&OUD diagnostic codes (95% CI = 5.7-14.8%) 29.6%. S&S of D&OUD (95% CI = 22.1-38.3%) | Not reported | 3-43% (current). Four studies included-prescribed opioids. SUD defined using investigators' operational definitions for categorization and included positive urine screens for illicit substances, self-reported history of SUD, medical record documentation of SUD status, responses on validated self-report measures as well as structured clinical interviews or diagnostic interviews | Not reported | Not reported | Not reported | 4.7% (range = 0.2-34.2%)*. Clinical diagnosis of opioid dependence or abuse disorder, established in studies by the use of DSM or ICD criteria or clinician assessment. 12 studies |
| Misuse | Not reported | Not reported | Not reported | Not reported | 8-16%, varied measurement of outcome. Seven studies | 21-29% (95% CI = 13-38%). Varied measurement of outcome. 29 studies | Not reported |

Abbreviation: SUD = Substance Use Disorder.

*Incidence rates are reported instead of prevalence rates. [†]In our analysis substance dependence is combined with Opioid Use Disorder. Rates for Dependence and Opioid Use Disorder (D&OUD) identified using diagnostic criteria and signs and symptoms (S&S) of D&OUD are included.

design, study setting and diagnostic tool/method of assessment impacted upon prevalence estimates. The heterogeneity caused by diagnostic tool may be explained by the variations in the definitions used by different DSM and ICD editions. For example, whereas the DSM-IV defined dependence and abuse as separate POU outcomes, DSM-5 combined these two definitions into a single classification of opioid use disorder [201]. Additionally, the definition for dependence in DSM-IV differed from the ICD definitions for dependence [202]. Study setting was also an important moderator; the lowest prevalence of D&OUD was observed in registry/database settings, with the highest prevalence observed in pain clinics, on-line and in mixed settings. With the exception of three studies [65, 116, 160], most of the studies reporting D&OUD using ICD codes were also registry/database studies; therefore, it is possible that the lower prevalence for D&OUD reported using ICD codes may be due to under-reporting or under-diagnosis of

patients based on clinical notes or algorithms in registry/database studies compared with active identification in other settings.

A fifth limitation is the inclusion of studies which considered aberrant behaviours of study participants as POU, despite issues with how some included studies used and conceptualized this term. Although aberrant behaviours may indicate a problematic relationship with prescription opioids, other contextual factors may influence the likelihood of these behaviours. For example, missed clinic visits, no-shows or no follow-up may be associated with other social issues or disability, and not reflect POU. Whereas an inappropriately positive urine drug test for the presence of other opioids may indicate problem use, a negative test may indicate medication non-adherence or diversion. Other aberrant behaviours, such as early refills or multiple prescriptions, may be indicative of inadequate pain control. Despite these shortcomings, we felt that it was still important to include a

prevalence estimate of aberrant drug-related behaviours to aid understanding of the extent of the problem of POU in this cohort of patients.

A final limitation is the inclusion of a category of POU for those at risk of D&OUD. Studies which used a high score (≥ 8) on the Opioid Risk Tool (ORT) to define POU, and which were originally classified as misuse by study authors, were included in this category. However, it is likely to be a very weak indicator of actual POU or D&OUD.

Comparison to other studies

It is important to compare our findings with the results of previous reviews. Voon *et al.* (2017) [24] carried out a review of reviews to synthesize evidence from previous systematic reviews [5, 10, 22, 23, 25, 203] on the epidemiology of chronic pain and prescription opioid misuse [abuse, addiction, dependence, misuse and substance use disorder (SUD)]. The results of this review updated with our study findings are presented in Table 2, together with the findings of other reviews which reported other POU outcomes not analysed in this review (abuse, addiction, misuse). Estimates were not reported from Kalso *et al.* (2004) due to small sample sizes and short duration of follow-up [5]. Findings from Higgins *et al.* (2018) [20] are also included in the table, although their results are not directly comparable with the other reviews as incidence rates were reported. Our pooled prevalence for dependence was within the ranges reported by Minozzi *et al.* (2013) [22] and Chou *et al.* (2015). Only one other study reported SUD (Morasco *et al.* 2011) [23]. The authors reported a range of 3–48%. However, the review is not directly comparable to ours due to variations in the method of assessment. The authors relied upon the operational definitions that the study investigators used to categorize SUD and did not re-classify POU outcomes. Their SUD category included self-reported history of SUD, documentation from medical records of SUD and positive urine drug screens for illicit substances (which we considered to be aberrant behaviour), in addition to validated self-report measures and structured clinical or diagnostic interviews.

CONCLUSIONS AND FUTURE RESEARCH

Our study has strengthened the evidence base regarding the commonality of POU in CNCP patients treated with opioids. However, it was also impacted by limitations of the evidence base, such as the heterogeneity of study methods, study settings and diagnostic tools used to identify POU and the lack of consistency and precision in POU definitions. Better reporting of study descriptors is needed, particularly with respect to ethnicity, type of prescription opioids used and the presence of other comorbid conditions, such as mental health issues, and problematic use of other medicines associated with dependence, such as benzodiazepines or gabapentinoids. There is an opportunity for high-quality studies using well-defined outcomes to be carried out in different settings and populations to provide better estimates. However, despite the problems identified with the literature,

there is enough evidence describing the extent of the problem for clinicians and policymakers to take appropriate action.

Current clinical guidance for the management of CNCP varies by geographical setting. In the UK, National Institute for Health and Care Excellence (NICE) guidance does not recommend the initiation of opioids to manage chronic pain in those aged 16 years and over, yet it is clearly happening [204]. In the United States, the new Centers for Disease Control and Prevention (CDC) guideline offers a more flexible approach to managing chronic pain with opioids, although they advise clinicians to use caution when prescribing opioids at any dosage and to consider the risk/benefit of opioids if they are considering increasing the dosage [205]. European clinical practice recommendations allow the use of opioids for chronic non-cancer pain, particularly where non-opioid treatments have been ineffective, contraindicated or not tolerated [206]. Better approaches are urgently needed to prevent and manage POU in CNCP. These may include the promotion of best practice in opioid prescribing, education of patients and prescribers regarding opioid-related harms, improving access to appropriate pain management, early screening and identification of POU and use of strategies for tapering or reducing opioids together with alternative pain management strategies to mitigate the risk of patients replacing with non-prescribed opioids and pharmacological and non-pharmacological treatment of POU.

AUTHOR CONTRIBUTIONS

Kyla Thomas: Conceptualization (lead); data curation (equal); formal analysis (equal); funding acquisition (lead); methodology (lead); writing—original draft (lead); writing—review and editing (lead). **Michael N Dalili:** Conceptualization (supporting); data curation (equal); formal analysis (equal); project administration (lead); writing—original draft (supporting); writing—review and editing (equal). **Hung-Yuan Cheng:** Data curation (supporting); formal analysis (lead); writing—review and editing (equal). **Sarah Dawson:** Data curation (supporting); writing—review and editing (supporting). **Nick Donnelly:** Data curation (supporting); writing—review and editing (equal). **Julian Higgins:** Methodology (supporting); writing—review and editing (supporting). **Matthew Hickman:** Conceptualization (supporting); methodology (supporting); writing—review and editing (supporting).

ACKNOWLEDGEMENTS

This study was funded by the National Institute for Health and Care Research, PDF-2017-10-068. The funder of the study had no role in the study design, data collection, data analysis, data interpretation or writing of the report. We would like to extend our appreciation to Adam Holland for his help with data extraction of the studies and for his comments on drafts of the manuscript. K.H.T. was funded by the NIHR for this research project (award ID PDF-2017-10-068). The funding source had no role in the study design, implementation, analysis and interpretation of the data, and in the writing of the manuscript. H.-Y.C. is supported by an NIHR Advanced Fellowship (NIHR301440). The views expressed in this publication are those of the authors and not necessarily those of the NIHR, NHS or the UK Department of Health and Social Care.

DECLARATION OF INTERESTS

All authors have completed the ICMJE uniform disclosure form at www.icmje.org/coi_disclosure.pdf and declare: K.T. reports financial support from the National Institute for Health and Care Research (NIHR) for this study.

DATA AVAILABILITY STATEMENT

Data are available from the corresponding author upon request.

ETHICS STATEMENT

Ethical approval for this evidence synthesis was not required.

DATA SHARING

Data are available from the corresponding author upon request.

ORCID

Kyla H. Thomas  <https://orcid.org/0000-0001-5418-4034>

Michael N. Dalili  <https://orcid.org/0000-0002-6687-5374>

Julian P. T. Higgins  <https://orcid.org/0000-0002-8323-2514>

Matthew Hickman  <https://orcid.org/0000-0001-9864-459X>

REFERENCES

- Vos T, Abajobir AA, Abate KH, Abbafati C, Abbas KM, Abd-Allah F, et al. Global, regional, and national incidence, prevalence, and years lived with disability for 328 diseases and injuries for 195 countries, 1990–2016: a systematic analysis for the global burden of disease study 2016. *Lancet*. 2017;390:1211–59.
- Dahlhamer J, Lucas J, Zelaya C, Nahin R, Mackey S, DeBar L, et al. Prevalence of chronic pain and high-impact chronic pain among adults—United States, 2016. *Morb Mortal Wkly Rep*. 2018;67:1001–6.
- Fayaz A, Croft P, Langford RM, Donaldson LJ, Jones GT. Prevalence of chronic pain in the UK: a systematic review and meta-analysis of population studies. *BMJ Open*. 2016;6:e010364.
- Busse JW, Wang L, Kamaleldin M, Craigie S, Riva JJ, Montoya L, et al. Opioids for chronic noncancer pain: a systematic review and meta-analysis. *JAMA*. 2018;320:2448–60.
- Kalso E, Edwards JE, Moore AR, McQuay HJ. Opioids in chronic non-cancer pain: systematic review of efficacy and safety. *Pain*. 2004;112:372–80.
- Mathieson S, Wertheimer G, Maher CG, Christine Lin C-W, McLachlan AJ, Buchbinder R, et al. What proportion of patients with chronic noncancer pain are prescribed an opioid medicine? Systematic review and meta-regression of observational studies. *J Intern Med*. 2020;287:458–74.
- Jani M, Birlie Yimer B, Sheppard T, Lunt M, Dixon WG. Time trends and prescribing patterns of opioid drugs in UK primary care patients with non-cancer pain: a retrospective cohort study. *PLoS Med*. 2020;17:e1003270.
- Taylor S, Annand F, Burkinshaw P, Greaves F, Kelleher M, Knight J, et al. Dependence and Withdrawal Associated With Some Prescribed Medicines: An Evidence Review London, UK: Public Health England; 2019.
- Alho H, Dematteis M, Lembo D, Maremmi I, Roncero C, Somaini L. Opioid-related deaths in Europe: strategies for a comprehensive approach to address a major public health concern. *Int J Drug Policy*. 2020;76:102616.
- Chou R, Turner JA, Devine EB, Hansen RN, Sullivan SD, Blazina I, et al. The effectiveness and risks of long-term opioid therapy for chronic pain: a systematic review for a National Institutes of Health pathways to prevention workshop. *Ann Intern Med*. 2015;162:276–86.
- Wilton J, Abdia Y, Chong M, Karim ME, Wong S, MacInnes A, et al. Prescription opioid treatment for non-cancer pain and initiation of injection drug use: large retrospective cohort study. *BMJ*. 2021;375:e066965.
- Ciccarone D. The triple wave epidemic: supply and demand drivers of the US opioid overdose crisis. *Int J Drug Policy*. 2019;71:183–8.
- US Department of Health and Human Services (HHS). HHS Acting Secretary Declares Public Health Emergency to Address National Opioid Crisis. 2017 [updated 26 October 2017; cited 2022 March]. Available at: <https://public3.pagefreezer.com/browse/HHS.gov/31-12-2020T08:51>/<https://www.hhs.gov/about/news/2017/10/26/hhs-acting-secretary-declares-public-health-emergency-address-national-opioid-crisis.html>
- Lancet Public Health. Editorial. Opioid overdose crisis: time for a radical rethink. *Lancet Public Health*. 2022;7:e195.
- Pierce M, van Amsterdam J, Kalkman GA, Schellekens A, van den Brink W. Is Europe facing an opioid crisis like the United States? An analysis of opioid use and related adverse effects in 19 European countries between 2010 and 2018. *Eur Psychiatry*. 2021;64:e47.
- Stannard C. Opioid prescribing in the UK: can we avert a public health disaster? *Br J Pain*. 2012;6:7–8.
- O'Toole E. MSPs vote for motion declaring Scotland's drug deaths as public health emergency. *The National* 18 March, 2021.
- Strang J, Volkow ND, Degenhardt L, Hickman M, Johnson K, Koob GF, et al. Opioid use disorder. *Nat Rev Dis Primers*. 2020;6(1):3. <https://doi.org/10.1038/s41572-019-0137-5>
- McCarty D, Priest KC, Korthuis PT. Treatment and prevention of opioid use disorder: challenges and opportunities. *Annu Rev Public Health*. 2018;39:525–41.
- Higgins C, Smith BH, Matthews K. Incidence of iatrogenic opioid dependence or abuse in patients with pain who were exposed to opioid analgesic therapy: a systematic review and meta-analysis. *Br J Anaesth*. 2018;120:1335–44.
- Jantarada C, Silva C, Guimarães-Pereira L. Prevalence of problematic use of opioids in patients with chronic noncancer pain: a systematic review with meta-analysis. *Pain Pract*. 2021;21:715–29.
- Minozzi S, Amato L, Davoli M. Development of dependence following treatment with opioid analgesics for pain relief: a systematic review. *Addiction*. 2013;108:688–98.
- Morasco BJ, Gritzner S, Lewis L, Oldham R, Turk DC, Dobscha SK. Systematic review of prevalence, correlates, and treatment outcomes for chronic non-cancer pain in patients with comorbid substance use disorder. *Pain*. 2011;152:488–97.
- Voon P, Karamouzian M, Kerr T. Chronic pain and opioid misuse: a review of reviews. *Subst Abuse Treat Prev Policy*. 2017;12:36.
- Vowles KE, McEntee ML, Julnes PS, Frohe T, Ney JP, van der Goes DN. Rates of opioid misuse, abuse, and addiction in chronic pain: a systematic review and data synthesis. *Pain*. 2015;156:569–76.
- Campbell G, Bruno R, Lintzeris N, Cohen M, Nielsen S, Hall W, et al. Defining problematic pharmaceutical opioid use among people prescribed opioids for chronic noncancer pain: do different measures identify the same patients? *Pain*. 2016;157:1489–98.
- Degenhardt L, Bruno R, Lintzeris N, Hall W, Nielsen S, Larance B, et al. Agreement between definitions of pharmaceutical opioid use disorders and dependence in people taking opioids for chronic non-cancer pain (POINT): a cohort study. *Lancet Psychiatry*. 2015;2:314–22.
- Maumus M, Mancini R, Zumsteg DM, Mandali DK. Aberrant drug-related behavior monitoring. *Ochsner J*. 2020;20:358–61.
- American Psychiatric Association (APA). *Diagnostic and Statistical Manual of Mental Disorders*, text revision, 4th edition. Washington, DC: APA; 2000.

30. National Institute on Drug Abuse. The Science of Drug Use and Addiction: The Basics. 2018 [updated 2 July 2018; cited 2022 March]. Available at: <https://www.drugabuse.gov/publications/media-guide/science-drug-use-addiction-basics>
31. World Health Organization (WHO). ICD-10: International Statistical Classification of Diseases And Related Health Problems: 10th revision, 2nd edition. Geneva, Switzerland: WHO; 2004.
32. World Health Organization (WHO). ICD-11: International Classification of Diseases for Mortality and Morbidity Statistics: 11th revision. Geneva, Switzerland: WHO; 2021.
33. American Psychiatric Association (APA). Diagnostic and Statistical Manual of Mental Disorders, 5th edition. Washington, DC: APA; 2013.
34. Page MJ, McKenzie JE, Bossuyt PM, Boutron I, Hoffmann TC, Mulrow CD, et al. The PRISMA 2020 statement: an updated guideline for reporting systematic reviews. *BMJ*. 2021;372:n71.
35. Lawrence R, Mogford D, Colvin L. Systematic review to determine which validated measurement tools can be used to assess risk of problematic analgesic use in patients with chronic pain. *Br J Anaesth*. 2017;119:1092–109.
36. Hoy D, Brooks P, Woolf A, Blyth F, March L, Bain C, et al. Assessing risk of bias in prevalence studies: modification of an existing tool and evidence of interrater agreement. *J Clin Epidemiol*. 2012;65:934–9.
37. López-López JA, Page MJ, Lipsey MW, Higgins JPT. Dealing with effect size multiplicity in systematic reviews and meta-analyses. *Res Synth Methods*. 2018;9:336–51.
38. Konstantopoulos S. Fixed effects and variance components estimation in three-level meta-analysis. *Res Synth Methods*. 2011;2:61–76.
39. Hedges LV, Tipton E, Johnson MC. Robust variance estimation in meta-regression with dependent effect size estimates. *Res Synth Methods*. 2010;1:39–65.
40. Tipton E, Pustejovsky JE. Small-sample adjustments for tests of moderators and model fit using robust variance estimation in meta-regression. *J Educ Behav Stat*. 2015;40:604–34.
41. Borenstein M, Higgins JPT, Hedges LV, Rothstein HR. Basics of meta-analysis: I2 is not an absolute measure of heterogeneity. *Res Synth Methods*. 2017;8:5–18.
42. Nakagawa S, Santos ESA. Methodological issues and advances in biological meta-analysis. *Evol Ecol*. 2012;26:1253–74.
43. Higgins JPT, Thompson SG, Spiegelhalter DJ. A re-evaluation of random-effects meta-analysis. *J R Stat Soc Ser A Stat Soc*. 2008;172:137–59.
44. Migliavaca CB, Stein C, Colpani V, Munn Z, Falavigna M. Quality assessment of prevalence studies: a systematic review. *J Clin Epidemiol*. 2020;127:59–68.
45. Pustejovsky J. clubSandwich: Cluster-Robust (Sandwich) Variance Estimators with Small-Sample Corrections 2023. Available at: <http://jepusto.github.io/clubSandwich/>
46. Viechtbauer W. Conducting meta-analyses in R with the metafor package. *J Stat Softw*. 2010;36:1–48.
47. Wickham H. *Ggplot2: Elegant Graphics for Data Analysis* New York, USA: Springer-Verlag; 2016.
48. Adams EH, Breiner S, Cicero TJ, Geller A, Inciardi JA, Schnoll SH, et al. A comparison of the abuse liability of tramadol, NSAIDs, and hydrocodone in patients with chronic pain. *J Pain Symptom Manage*. 2006;31:465–76.
49. Adams LL, Gatchel RJ, Robinson RC, Polatin P, Gajraj N, Deschner M, et al. Development of a self-report screening instrument for assessing potential opioid medication misuse in chronic pain patients. *J Pain Symptom Manage*. 2004;27:440–59.
50. Alamanda VK, Wally MK, Seymour RB, Springer BD, Hsu JR. Prevalence of opioid and benzodiazepine prescriptions for osteoarthritis. *Arthritis Care Res*. 2020;72:1081–6.
51. Bakhai S, Thilagar B, Reynolds JL, Leonard KE. Correlates of opiate misuse based on aberrant urine drug tests for patients on chronic opiate therapy in a safety-net, academic primary care clinic. *J Opioid Manag*. 2018;14:23–33.
52. Banta-Green CJ, Merrill JO, Doyle SR, Boudreau DM, Calsyn DA. Opioid use behaviors, mental health and pain—development of a typology of chronic pain patients. *Drug Alcohol Depend* 2009;104:34–42.
53. Banta-Green CJ, Von Korff M, Sullivan MD, Merrill JO, Doyle SR, Saunders K. The prescribed opioids difficulties scale: a patient-centered assessment of problems and concerns. *Clin J Pain*. 2010;26:489–97.
54. Barkett P. Schedule II narcotic use, abuse and correlation with safety measures in an academic primary care setting prior to the initiation of formal opiate safety policies: a retrospective chart review [conference abstract]. *J Gen Intern Med*. 2014;1:S206.
55. Barth KS, Balliet W, Pelic CM, Madan A, Malcolm R, Adams D, et al. Screening for current opioid misuse and associated risk factors among patients with chronic nonalcoholic pancreatitis pain. *Pain Med*. 2014;15:1359–64.
56. Baser O, Xie L, Mardekian J, Schaaf D, Wang L, Joshi AV. Prevalence of diagnosed opioid abuse and its economic burden in the Veterans Health Administration. *Pain Pract*. 2014;14:437–45.
57. Black RA, McCaffrey SA, Villapiano AJ, Jamison RN, Butler SF. Development and validation of an eight-item brief form of the SOAPP-R (SOAPP-8). *Pain Med*. 2018;19:1982–7.
58. Boscarino JA, Hoffman SN, Han JJ. Opioid-use disorder among patients on long-term opioid therapy: impact of final DSM-5 diagnostic criteria on prevalence and correlates. *Subst Abuse Rehabil*. 2015;6:83–91.
59. Boscarino JA, Withey CA, Dugan RJ, Hu Y, Auciello J, Alfieri T. Opioid medication use among chronic non-cancer pain patients assessed with a modified drug effects questionnaire and the association with opioid use disorder. *J Pain Res*. 2020;13:2697–705.
60. Broekmans S, Dobbels F, Milisen K, Morlion B, Vanderschueren S. Pharmacologic pain treatment in a multidisciplinary pain center: do patients adhere to the prescription of the physician? *Clin J Pain*. 2010;26:81–6.
61. Brown J, Setnik B, Lee K, Wase L, Roland CL, Cleveland JM, et al. Assessment, stratification, and monitoring of the risk for prescription opioid misuse and abuse in the primary care setting. *J Opioid Manag*. 2011;7:467–83.
62. Brunkow A, Cannon M, Graff FS, Martin JL, Hausmann LRM, McAndrew LM. Doctor recommendations are related to patient interest and use of behavioral treatment for chronic pain and addiction. *J Pain*. 2020;21:979–87.
63. Butler SF, Budman SH, Fanciullo GJ, Jamison RN. Cross validation of the current opioid misuse measure to monitor chronic pain patients on opioid therapy. *Clin J Pain*. 2010;26:770–6.
64. Butler SF, Budman SH, Fernandez K, Jamison RN. Validation of a screener and opioid assessment measure for patients with chronic pain. *Pain*. 2004;112:65–75.
65. Campbell G, Noghrehchi F, Nielsen S, Clare P, Bruno R, Lintzeris N, et al. Risk factors for indicators of opioid-related harms amongst people living with chronic non-cancer pain: findings from a 5-year prospective cohort study. *EClinMed*. 2020;28:100592.
66. Castel A, Padrol A, Rull M. Use of the 5-point prescription opiate abuse checklist in non-malignant chronic pain patients taking short-acting opioids for incidental pain [conference abstract]. *Pain Pract*. 2012;1:43.
67. Chabal C, Erjavec MK, Jacobson L, Mariano A, Chaney E. Prescription opiate abuse in chronic pain patients: clinical criteria, incidence, and predictors. *Clin J Pain*. 1997;13:150–5.
68. Chalmers CE, Mullinax S, Brennan J, Vilke GM, Oliveto AH, Wilson MP. Screening tools validated in the outpatient pain management setting poorly predict opioid misuse in the emergency department: a pilot study. *J Emerg Med*. 2019;56:601–10.
69. Chang YP. Factors associated with prescription opioid misuse in adults aged 50 or older. *Nurs Outlook*. 2017;29:29.

70. Cheattle MD, Falcone M, Dhingra L, Lerman C. Independent association of tobacco use with opioid use disorder in patients of European ancestry with chronic non-cancer pain. *Drug Alcohol Depend.* 2020; 209:107901.
71. Cheattle MD, Gallagher RM, O'Brien CP. Low risk of producing an opioid use disorder in primary care by prescribing opioids to pre-screened patients with chronic noncancer pain. *Pain Med.* 2017; 31:31.
72. Chelminski PR, Ives TJ, Felix KM, Prakken SD, Miller TM, Perhac JS, et al. A primary care, multi-disciplinary disease management program for opioid-treated patients with chronic non-cancer pain and a high burden of psychiatric comorbidity. *BMC Health Serv Res.* 2005;5:3.
73. Chenaf C, Kabore JL, Delorme J, Pereira B, Mulliez A, Roche L, et al. Incidence of tramadol shopping behavior in a retrospective cohort of chronic non-cancer pain patients in France. *Pharmacoepidemiol Drug Saf.* 2016;25:1088–98.
74. Colasanti J, Lira MC, Cheng DM, Liebschutz JM, Tsui JI, Forman LS, et al. Chronic opioid therapy in people living with human immunodeficiency virus: patients' perspectives on risks, monitoring, and guidelines. *Clin Infect Dis.* 2019;68:291–7.
75. Coloma-Carmona A, Carballo JL, Rodriguez-Marin J, Perez-Carbonell A. Use and dependence on opioid drugs in the Spanish population with chronic pain: prevalence and differences according to sex. *Rev Clin Esp.* 2017;217:315–9.
76. Coloma-Carmona AC, Carballo JL, Rodriguez-Marin J, Perez-Carbonell A, Alonso-Garrido C. Medical and psychological predictors of prescription opioids dependence during chronic pain treatment. *Eur Rev Appl Psychol* 2018;68:199–204.
77. Coloma-Carmona AC, Carballo JL, Rodriguez-Marin J, Perez-Carbonell A. Withdrawal symptoms predict prescription opioid dependence in chronic pain patients. *Drug Alcohol Depend* 2019; 195:27–32.
78. Compton PA, Wu SM, Schieffer B, Pham Q, Naliboff BD. Introduction of a self-report version of the prescription drug use questionnaire and relationship to medication agreement noncompliance. *J Pain Symptom Manage.* 2008;36:383–95.
79. Coutinho A, Gajria K, Fuldeore R, Landsman-Blumberg P, Gandhi S. An assessment of opioid abuse risk and its relationship with health-care resource use in long-term opioid users with chronic non-cancer pain [conference abstract]. *Postgrad Med J.* 2016;128:27–8.
80. Couto JE, Romney MC, Leider HL, Sharma S, Goldfarb NI. High rates of inappropriate drug use in the chronic pain population. *Popul Health Manag.* 2009;12:185–90.
81. Cowan DT, Allan L, Griffiths P. A pilot study into the problematic use of opioid analgesics in chronic non-cancer pain patients. *Int J Nurs Stud.* 2002;39:59–69.
82. Cowan DT, Wilson-Barnett J, Griffiths P, Allan LG. A survey of chronic noncancer pain patients prescribed opioid analgesics. *Pain Med.* 2003;4:340–51.
83. Coyne KS, Barsdorf AI, Currie BM, Poon JL, Maziere JY, Pierson RF, et al. Insight into chronic pain in the United States: descriptive results from the prescription opioid misuse and Abuse questionnaire (POMAQ) validation study. *Curr Med Res Opin.* 2021;37:483–92.
84. Coyne KSB, Barsdorf AI, Poon J, Maziere JA, Pierson RF, Schnell S, et al. Descriptive results from the prescription opioid misuse and abuse questionnaire (POMAQ) validation study. *Value Health.* 2018; 21:S2.
85. Crocker JA, Yu H, Conaway M, Tuskey AG, Behm BW. Narcotic use and misuse in Crohn's disease. *Inflamm Bowel Dis.* 2014;20:2234–8.
86. Dematteis M, Bouhassira D, Perrot S. Prevalence of opioid misuse in chronic opioid analgesic therapy for non-cancer pain is high in France. *Heroin Addict Relat Clin Probl* 2018;20:63–4.
87. Dersh J, Mayer T, Theodore BR, Polatin P, Gatchel RJ. Do psychiatric disorders first appear preinjury or postinjury in chronic disabling occupational spinal disorders? *Spine.* 2007;32:1045–51.
88. DiBenedetto DJ, Wawrzyniak KM, Schatman ME, Shapiro H, Kulich RJ. Increased frequency of urine drug testing in chronic opioid therapy: rationale for strategies for enhancing patient adherence and safety. *J Pain Res.* 2019;12:2239–46.
89. Edlund MJ, Martin BC, Fan MY, DeVries A, Braden JB, Sullivan MD. Risks for opioid abuse and dependence among recipients of chronic opioid therapy: results from the TROUP study. *Drug Alcohol Depend.* 2010;112:90–8.
90. Edlund MJ, Martin BC, Russo JE, DeVries A, Braden JB, Sullivan MD. The role of opioid prescription in incident opioid abuse and dependence among individuals with chronic noncancer pain: the role of opioid prescription. *Clin J Pain.* 2014;30:557–64.
91. Edlund MJ, Steffick D, Hudson T, Harris KM, Sullivan M. Risk factors for clinically recognized opioid abuse and dependence among veterans using opioids for chronic non-cancer pain. *Pain.* 2007;129: 355–62.
92. Edlund MJ, Sullivan M, Steffick D, Harris KM, Wells KB. Do users of regularly prescribed opioids have higher rates of substance use problems than nonusers? *Pain Med.* 2007;8:647–56.
93. Eichorn D, Lesenskyj A, Maxwell C, Moore S, Cruciani R. The feasibility and value of using the SOAPP-R to predict substance abuse in an outpatient pain clinic. *J Pain.* 2016;1:S24.
94. Eiden C, Ginies P, Nogue E, Damdjy Y, Picot MC, Donnadiou-Rigole H, et al. High prevalence of misuse of prescribed opioid analgesics in patients with chronic non-cancer pain. *J Psychoact Drugs.* 2019;51:371–6.
95. Faber P, Kanakarajan S. Strong opioid use and misuse in chronic pain clinic [conference abstract]. *Eur J Pain.* 2009;1:S209.
96. Feingold D, Goor-Aryeh I, Bril S, Delayahu Y, Lev-Ran S. Problematic use of prescription opioids and medicinal Cannabis among patients suffering from chronic pain. *Pain Med.* 2017;18:294–306.
97. Ferrari R, Duse G, Capraro M, Visentin M. Risk assessment of opioid misuse in Italian patients with chronic noncancer pain. *Pain Res Treat.* 2014;2014:584986.
98. Fitzcharles MA, Ste-Marie PA, Gamsa A, Ware MA, Shir Y. Opioid use, misuse, and abuse in patients labeled as fibromyalgia. *Am J Med.* 2011;124:955–60.
99. Fleming MF, Balousek SL, Klessig CL, Mundt MP, Brown DD. Substance use disorders in a primary care sample receiving daily opioid therapy. *J Pain.* 2007;8:573–82.
100. Fleming MF, Davis J, Passik SD. Reported lifetime aberrant drug-taking behaviors are predictive of current substance use and mental health problems in primary care patients. *Pain Med.* 2008;9: 1098–106.
101. Frimerman L, Verner M, Sirois A, Scott K, Bruneau A, Perez J, et al. Day-to-day hedonic and calming effects of opioids, opioid craving, and opioid misuse among patients with chronic pain prescribed long-term opioid therapy. *Pain.* 2021;162:2214–24.
102. Gadiyar V. Chronic pain clinics: IS there misuse of strong opioids? [conference abstract]. *Eur J Pain Suppl.* 2011;5:90.
103. Garland EL, Howard MO. Prescription opioid misusers exhibit blunted parasympathetic regulation during inhibitory control challenge. *Psychopharmacology.* 2021;238:765–74.
104. Garland EL, Trostheim M, Eikemo M, Ernst G, Leknes S. Anhedonia in chronic pain and prescription opioid misuse. *Psychol Med.* 2020; 50:1977–88.
105. Garland ELH, Hanley AW, Bedford CE, Zubieta JK, Howard MO, Nakamura Y, et al. Reappraisal deficits promote craving and emotional distress among chronic pain patients at risk for prescription opioid misuse. *J Addict Dis.* 2018;37:14–22.

106. George JM, Menon M, Gupta P, Tan MG. Use of strong opioids for chronic non-cancer pain: a retrospective analysis at a pain Centre in Singapore. *Singapore Med J*. 2013;54:506–10.
107. Ghodke A, Ives TJ, Austin AE, Bennett WC, Patel NY, Eshet SA, et al. Pain agreements and time-to-event analysis of substance misuse in a primary care chronic pain program. *Pain Med*. 2020; 21:2154–62.
108. Grande LA, Thompson EC, Au MA, Sawyer D, Baldwin LM, Rosenblatt R. Problem drug-related behavior and discontinuation of opioids following the introduction of an opioid management program. *J Am Board Fam Med*. 2016;29:718–26.
109. Grattan A, Sullivan MD, Saunders KW, Campbell CI, Von Korff MR. Depression and prescription opioid misuse among chronic opioid therapy recipients with no history of substance abuse. *Ann Fam Med*. 2012;10:304–11.
110. Hah JM, Sturgeon JA, Zocca J, Sharifzadeh Y, Mackey SC. Factors associated with prescription opioid misuse in a cross-sectional cohort of patients with chronic non-cancer pain. *J Pain Res*. 2017;10: 979–87.
111. Haller IV, Renier CM, Juusola M, Hitz P, Steffen W, Asmus MJ, et al. Enhancing risk assessment in patients receiving chronic opioid analgesic therapy using natural language processing. *Pain Med*. 2017;18: 1952–60.
112. Häuser W, Schubert T, Scherbaum N, Tölle T. Long-term opioid therapy of non-cancer pain: prevalence and predictors of hospitalization in the event of possible misuse. *Schmerz*. 2018;32:419–26.
113. Hayes CJ, Krebs EE, Hudson T, Brown J, Li C, Martin BC. Impact of opioid dose escalation on the development of substance use disorders, accidents, self-inflicted injuries, opioid overdoses and alcohol and non-opioid drug-related overdoses: a retrospective cohort study. *Addiction*. 2020;115:1098–112.
114. Henderson A, Chai PR, Babu KM. Prescription opioid misuse among geriatric patients [conference abstract]. *Acad Emerg Med*. 2012;1: S367–8.
115. Hoffmann NG, Olofsson O, Salen B, Wickstrom L. Prevalence of abuse and dependency in chronic pain patients. *Int J Addict*. 1995; 30:919–27.
116. Hojsted J, Nielsen PR, Guldstrand SK, Frich L, Sjogren P. Classification and identification of opioid addiction in chronic pain patients. *Eur J Pain*. 2010;14:1014–20.
117. Hylan TR, Von Korff M, Saunders K, Masters E, Palmer RE, Carrell D, et al. Automated prediction of risk for problem opioid use in a primary care setting. *J Pain*. 2015;16:380–7.
118. Ives TJ, Chelminski PR, Hammett-Stabler CA, Malone RM, Perhac JS, Potisek NM, et al. Predictors of opioid misuse in patients with chronic pain: a prospective cohort study. *BMC Health Serv Res*. 2006;6:46.
119. Jamison RN, Butler SF, Budman SH, Edwards RR, Wasan AD. Gender differences in risk factors for aberrant prescription opioid use. *J Pain*. 2010;11:312–20.
120. Jamison RN, Link CL, Marceau LD. Do pain patients at high risk for substance misuse experience more pain? A Longitudinal Outcomes Study. *Pain Med*. 2009;10:1084–94.
121. Jamison RN, Martel MO, Huang CC, Jurcik D, Edwards RR. Efficacy of the opioid compliance checklist to monitor chronic pain patients receiving opioid therapy in primary care. *J Pain*. 2016;17:414–23.
122. Jonasson U, Jonasson B, Wickstrom L, Andersson E, Saldeen T. Analgesic use disorders among orthopedic and chronic pain patients at a rehabilitation clinic. *Subst Use Misuse*. 1998;33:1375–85.
123. Just JM, Schwerbrock F, Bleckwenn M, Schnakenberg R, Weckbecker K. Opioid use disorder in chronic non-cancer pain in Germany: a cross sectional study. *BMJ Open*. 2019;9:e026871.
124. Just JM, Bingener L, Bleckwenn M, Schnakenberg R, Weckbecker K. Risk of opioid misuse in chronic non-cancer pain in primary care patients—a cross sectional study. *BMC Fam Pract*. 2018;19:92.
125. Katon W, Egan K, Miller D. Chronic pain: lifetime psychiatric diagnoses and family history. *Am J Psychiatry*. 1985;142:1156–60.
126. Katz NP, Sherburne S, Beach M, Rose RJ, Vielguth J, Bradley J, et al. Behavioral monitoring and urine toxicology testing in patients receiving long-term opioid therapy. *Anesth Analg*. 2003;97:1097–102.
127. Knezevic NN, Khan OM, Beiranvand A, Candido KD. Repeated quantitative urine toxicology analysis may improve chronic pain patient compliance with opioid therapy. *Pain Physician*. 2017;20:S135–45.
128. Kouyanou K, Pither CE, Wessely S. Medication misuse, abuse and dependence in chronic pain patients. *J Psychosom Res*. 1997;43: 497–504.
129. Kovatch M, Feingold D, Elkana O, Lev-Ran S. Evaluation and comparison of tools for diagnosing problematic prescription opioid use among chronic pain patients. *Int J Methods Psychiatr Res* 2017;26: e1542.
130. Kurita GP, Højsted J, Sjøgren P. Tapering off long-term opioid therapy in chronic non-cancer pain patients: a randomized clinical trial. *Eur J Pain*. 2018;22:1528–43.
131. Laroche M, Cruz R, Kosakowski S, Gourlay D, Alford DP, Xuan Z, et al. Oxycodone urine drug tests identify potential misuse and diversion among patients prescribed opioids for chronic pain. *J Gen Intern Med*. 2019;34:S304.
132. LaRowe LR, Powers JM, Garey L, Rogers AH, Zvolensky MJ, Ditre JW. Pain-related anxiety, sex, and co-use of alcohol and prescription opioids among adults with chronic low back pain. *Drug Alcohol Depend*. 2020;214:108171.
133. Lee CS, Kim D, Park SY, Lee SC, Kim YC, Moon JY. Usefulness of the Korean version of the CAGE-adapted to include drugs combined with clinical predictors to screen for opioid-related aberrant behavior. *Anesth Analg*. 2019;129:864–73.
134. Lee CT, Vo TT, Cohen AS, Ahmed S, Zhang Y, Mao J, et al. Profiles of urine drug test in clinical pain patients vs pain research study subjects. *Pain Med*. 2016;17:636–43.
135. Lewis M, Herndon CM, Chibnall JT. Patient aberrant drug taking behaviors in a large family medicine residency program: a retrospective chart review of screening practices, incidence, and predictors. *J Opioid Manag*. 2014;10:169–75.
136. Liebschutz JM, Saitz R, Weiss RD, Averbuch T, Schwartz S, Meltzer EC, et al. Clinical factors associated with prescription drug use disorder in urban primary care patients with chronic pain. *J Pain*. 2010;11:1047–55.
137. Manchikanti L, Cash KA, Damron KS, Manchukonda R, Pampati V, McManus CD. Controlled substance abuse and illicit drug use in chronic pain patients: an evaluation of multiple variables. *Pain Physician*. 2006;9:215–25.
138. Manchikanti L, Cash KA, Malla Y, Pampati V, Fellows B. A prospective evaluation of psychotherapeutic and illicit drug use in patients presenting with chronic pain at the time of initial evaluation. *Pain Physician*. 2013;16:E1–E13.
139. Manchikanti L, Giordano J, Boswell MV, Fellows B, Manchukonda R, Pampati V. Psychological factors as predictors of opioid abuse and illicit drug use in chronic pain patients. *J Opioid Manag*. 2007;3: 89–100.
140. Manchikanti L, Manchukonda R, Damron KS, Brandon D, McManus CD, Cash K. Does adherence monitoring reduce controlled substance abuse in chronic pain patients? *Pain Physician*. 2006;9: 57–60.
141. Manchikanti L, Manchukonda R, Pampati V, Damron KS. Evaluation of abuse of prescription and illicit drugs in chronic pain patients receiving short-acting (hydrocodone) or long-acting (methadone) opioids. *Pain Physician*. 2005;8:257–61.
142. Manchikanti L, Pampati V, Damron KS, Beyer CD, Barnhill RC, Fellows B. Prevalence of prescription drug abuse and dependency in patients with chronic pain in western Kentucky. *J Ky Med Assoc*. 2003;101(11):511–7.

143. Manchikanti L, Pampati V, Damron KS, Fellows B, Barnhill RC, Beyer CD. Prevalence of opioid abuse in interventional pain medicine practice settings: a randomized clinical evaluation. *Pain Physician*. 2001;4:358–65.
144. Marshall U, L'Hoest H, Radbruch L, Hauser W. Long-term opioid therapy for chronic non-cancer pain in Germany [erratum appears in *Eur J Pain* 2017;21:1774; PMID: 28990730]. *Eur J Pain*. 2016;20:767–76.
145. Martel MO, Edwards RR, Jamison RN. The relative contribution of pain and psychological factors to opioid misuse: a 6-month observational study. *Am Psychol*. 2020;75:772–83.
146. McCaffrey SA, Black RA, Villapiano AJ, Jamison RN, Butler SF. Development of a brief version of the current opioid misuse measure (COMM): the COMM-9. *Pain Med*. 2019;20:113–8.
147. McHugh RK, Weiss RD, Cornelius M, Martel MO, Jamison RN, Edwards RR. Distress intolerance and prescription opioid misuse among patients with chronic pain. *J Pain*. 2016;17:806–14.
148. Meltzer EC, Rybin D, Meshesha LZ, Saitz R, Samet JH, Rubens SL, et al. Aberrant drug-related behaviors: unsystematic documentation does not identify prescription drug use disorder. *Pain Med*. 2012;13:1436–43.
149. Meltzer EC, Rybin D, Saitz R, Samet JH, Schwartz SL, Butler SF, et al. Identifying prescription opioid use disorder in primary care: diagnostic characteristics of the current opioid misuse measure (COMM). *Pain*. 2011;152:397–402.
150. Merlin JS, Samet JH, Cheng DM, Lira MC, Tsui JI, Forman LS, et al. Marijuana use and its associations with pain, opioid dose, and HIV viral suppression among persons living with HIV on chronic opioid therapy. *J Acquir Immune Defic Syndr*. 2019;82:195–201.
151. Moeller SJ, Hanley AW, Garland EL. Behavioral preference for viewing drug v. pleasant images predicts current and future opioid misuse among chronic pain patients. *Psychol Med*. 2020;50:644–52.
152. Morasco BJ, Dobscha SK. Prescription medication misuse and substance use disorder in VA primary care patients with chronic pain. *Gen Hosp Psychiatry*. 2008;30:93–9.
153. Morasco BJ, Iacocca MO, Lovejoy TI, Dobscha SK, Deyo RA, Cavese JA, et al. Utility of the pain medication questionnaire to predict aberrant urine drug tests: results from a longitudinal cohort study. *Psychol Serv*. 2020;16:16.
154. Morasco BJ, Krebs EE, Cavanagh R, Hyde S, Crain A, Dobscha SK. Treatment changes following aberrant urine drug test results for patients prescribed chronic opioid therapy. *J Opioid Manag*. 2015;11:45–51.
155. Naliboff BD, Wu SM, Schieffer B, Bolus R, Pham Q, Baria A, et al. A randomized trial of 2 prescription strategies for opioid treatment of chronic nonmalignant pain. *J Pain*. 2011;12:288–96.
156. Palmer RE, Carrell DS, Cronkite D, Saunders K, Gross DE, Masters E, et al. The prevalence of problem opioid use in patients receiving chronic opioid therapy: computer-assisted review of electronic health record clinical notes. *Pain*. 2015;156:1208–14.
157. Passik SD, Messina J, Golsorkhi A, Xie F. Aberrant drug-related behavior observed during clinical studies involving patients taking chronic opioid therapy for persistent pain and fentanyl buccal tablet for breakthrough pain. *J Pain Symptom Manage*. 2011;41:116–25.
158. Passik SD, Narayana A, Yang R. Aberrant drug-related behavior observed during a 12-week open-label extension period of a study involving patients taking chronic opioid therapy for persistent pain and fentanyl buccal tablet or traditional short-acting opioid for breakthrough pain. *Pain Med*. 2014;15:1365–72.
159. Picco L, Middleton M, Bruno R, Kowalski M, Nielsen S. Validation of the OWLS, a screening tool for measuring prescription opioid use disorder in primary care. *Pain Med*. 2020;31:31.
160. Plesner K, Jensen HI, Hojsted J. Smoking history, nicotine dependence and opioid use in patients with chronic non-malignant pain. *Acta Anaesthesiol Scand*. 2016;60:988–94.
161. Portenoy RK, Farrar JT, Backonja MM, Cleeland CS, Yang K, Friedman M, et al. Long-term use of controlled-release oxycodone for noncancer pain: results of a 3-year registry study. *Clin J Pain*. 2007;23:287–99.
162. Reid MC, Engles-Horton LL, Weber MB, Kerns RD, Rogers EL, O'Connor PG. Use of opioid medications for chronic noncancer pain syndromes in primary care. *J Gen Intern Med*. 2002;17:173–9.
163. Reynolds CJ, Vest N, Trageser SL. Borderline personality disorder features and risk for prescription opioid misuse in a chronic pain sample: roles for identity disturbances and impulsivity. *J Pers Disord*. 2021;35:270–87.
164. Richard E, Pazmino AG, De La Cruz AA, Cunningham C, Perez HR, Zhang C, et al. Relationship between mental health and opioid misuse in people living with HIV and chronic pain. *J Gen Intern Med*. 2019;34:S345.
165. Rife TL, Pennington DL, Brady KA, Cardoos SL. Implementation and evaluation of an interdisciplinary prescription opioid safety team. *J Addict Med*. 2018;12:E13.
166. Rogers AH, Garey L, Raines AM, Allan NP, Schmidt NB, Zvolensky MJ. Anxiety sensitivity and opioid use motives among adults with chronic low back pain. *Exp Clin Psychopharmacol*. 2020;30:23–30.
167. Schneider JP, Kirsh KL. Defining clinical issues around tolerance, hyperalgesia, and addiction: a quantitative and qualitative outcome study of long-term opioid dosing in a chronic pain practice. *J Opioid Manag*. 2010;6:385–95.
168. Sekhon R, Aminjavahery N, Davis CN Jr, Roswarski MJ, Robinette C. Compliance with opioid treatment guidelines for chronic non-cancer pain (CNCP) in primary care at a veterans affairs medical center (VAMC). *Pain Med*. 2013;14:1548–56.
169. Setnik B, Roland CL, Sommerville KW, Pixton GC, Berke R, Calkins A, et al. A multicenter, primary care-based, open-label study to identify behaviors related to prescription opioid misuse, abuse, and diversion in opioid-experienced patients with chronic moderate-to-severe pain. *J Pain Res*. 2015;8:361–73.
170. Shahi N, Patchett-Marble R. Systematic urine drug testing for detecting and managing opioid misuse among chronic noncancer pain patients in primary care—the HARMS program: a retrospective chart review of 77 patients. *J Opioid Manag*. 2020;16:277–82.
171. Skurtveit S, Furu K, Borchgrevink P, Handal M, Fredheim O. To what extent does a cohort of new users of weak opioids develop persistent or probable problematic opioid use? *Pain*. 2011;152:1555–61.
172. Smit T, Rogers AH, Garey L, Allan NP, Viana AG, Zvolensky MJ. Anxiety sensitivity and pain intensity independently predict opioid misuse and dependence in chronic pain patients. *Psychiatry Res*. 2020;294:113523.
173. Sullivan MD, Edlund MJ, Fan M-Y, DeVries A, Braden JB, Martin BC. Risks for possible and probable opioid misuse among recipients of chronic opioid therapy in commercial and Medicaid insurance plans: the TROUP study. *Pain*. 2010;150:332–9.
174. Sullivan MD, Von Korff M, Banta-Green C, Merrill JO, Saunders K. Problems and concerns of patients receiving chronic opioid therapy for chronic non-cancer pain. *Pain*. 2010;149:345–53.
175. Tsai M, Charles MD. Predictors and follow-up using the current opioid misuse measure in primary care. *J Gen Intern Med*. 2019;34:5319–20.
176. Turner JA, Saunders K, Shortreed SM, LeResche L, Riddell K, Rapp SE, et al. Chronic opioid therapy urine drug testing in primary care: prevalence and predictors of aberrant results. *J Gen Intern Med*. 2014;29:1663–71.
177. Twohig P, Butt M, Gardner T, Sandhu DS. Opioid dependence among chronic pancreatitis patients: a trend analysis of 15 years. *Am J Gastroenterol*. 2019;114:S53–6.
178. Vaglianti RM, Huber SJ, Noel KR, Johnstone RE. Misuse of prescribed controlled substances defined by urinalysis. *W V Med J*. 2003;99:67–70.

179. Villarreal YR, Stotts AL, Paniagua SM, Rosen K, Eckmann M, Suchting R, et al. Mindfulness predicts current risk of opioid analgesic misuse in chronic low back pain patients receiving opioid therapy. *J Contextual Behav Sci.* 2020;18:111–6.
180. Von Korff M, Walker RL, Saunders K, Shortreed SM, Thakral M, Parchman M, et al. Prevalence of prescription opioid use disorder among chronic opioid therapy patients after health plan opioid dose and risk reduction initiatives. *Int J Drug Policy.* 2017;46:90–8.
181. Vowles KE, Witkiewitz K, Pielech M, Edwards KA, McEntee ML, Bailey RW, et al. Alcohol and opioid use in chronic pain: a cross-sectional examination of differences in functioning based on misuse status. *J Pain.* 2018;19:1181–8.
182. Walid MS. Opioid dependence among older pre-spine surgery patients. A prospective study. *J Pain Manag.* 2009;2:125–8.
183. Walid MS, Hyer L, Ajjan M, Barth AC, Robinson JS Jr. Prevalence of opioid dependence in spine surgery patients and correlation with length of stay. *J Opioid Manag.* 2007;3. PMID: 127–128, 130–122, 132.
184. Wasan AD, Butler SF, Budman SH, Benoit C, Fernandez K, Jamison RN. Psychiatric history and psychologic adjustment as risk factors for aberrant drug-related behavior among patients with chronic pain. *Clin J Pain.* 2007;23:307–15.
185. Wasan AD, Butler SF, Budman SH, Fernandez K, Weiss RD, Greenfield SF, et al. Does report of craving opioid medication predict aberrant drug behavior among chronic pain patients? *Clin J Pain.* 2009;25:193–8.
186. Wasan AD, Michna E, Edwards RR, Katz JN, Nedeljkovic SS, Dolman AJ, et al. Psychiatric comorbidity is associated prospectively with diminished opioid analgesia and increased opioid misuse in patients with chronic low back pain. *Anesthesiology.* 2015;123:861–72.
187. Watson CP, Watt-Watson J, Chipman M. The long-term safety and efficacy of opioids: a survey of 84 selected patients with intractable chronic noncancer pain. *Pain Res Manag.* 2010;15:213–7.
188. Webster LR, Webster RM. Predicting aberrant behaviors in opioid-treated patients: preliminary validation of the opioid risk tool. *Pain Med.* 2005;6:432–42.
189. Wiedemer NL, Harden PS, Arndt IO, Gallagher RM. The opioid renewal clinic: a primary care, managed approach to opioid therapy in chronic pain patients at risk for substance abuse. *Pain Med.* 2007;8:573–84.
190. Wilsey BL, Fishman SM, Tsodikov A, Ogden C, Symreng I, Ernst A. Psychological comorbidities predicting prescription opioid abuse among patients in chronic pain presenting to the emergency department. *Pain Med.* 2008;9:1107–17.
191. Witkin LR, Diskina D, Fernandes S, Farrar JT, Ashburn MA. Usefulness of the opioid risk tool to predict aberrant drug-related behavior in patients receiving opioids for the treatment of chronic pain. *J Opioid Manag.* 2013;9:177–87.
192. Wu SM, Compton P, Bolus R, Schieffer B, Pham Q, Baria A, et al. The addiction behaviors checklist: validation of a new clinician-based measure of inappropriate opioid use in chronic pain. *J Pain Symptom Manage.* 2006;32:342–51.
193. Wunsch MJ, Cropsey KL, Campbell ED, Knisely JS. OxyContin use and misuse in three populations: substance abuse patients, pain patients, and criminal justice participants. *J Opioid Manag.* 2008;4(2):73–9. <https://doi.org/10.5055/jom.2008.0011>
194. Zhou L, Bhattacharjee S, Kwok CK, Tighe PJ, Reisfield GM, Malone DC, et al. Dual-trajectories of opioid and gabapentinoid use and risk of subsequent drug overdose among Medicare beneficiaries in the United States: a retrospective cohort study. *Addiction.* 2020;10:10.
195. Zvolensky MJ, Rogers AH, Garey L, Shepherd JM, Ditre JW. Opioid misuse among smokers with chronic pain: relations with substance use and mental health. *Behav Med.* 2020;47:335–43.
196. Campbell G, Bruno R, Darke S, Degenhardt L. Associations of borderline personality with pain, problems with medications and suicidality in a community sample of chronic non-cancer pain patients prescribed opioids for pain. *Gen Hosp Psychiatry.* 2015;37:434–40.
197. Campbell G, Nielsen S, Larance B, Bruno R, Mattick R, Hall W, et al. Pharmaceutical opioid use and dependence among people living with chronic pain: associations observed within the pain and opioids in treatment (POINT) cohort. *Pain Med.* 2015;16:1745–58.
198. Larance B, Campbell G, Moore T, Nielsen S, Bruno R, Lintzeris N, et al. Concerns and help-seeking among patients using opioids for management of chronic noncancer pain. *Pain Med.* 2019;20:758–69.
199. Peacock A, Degenhardt L, Campbell G, Larance B, Nielsen S, Hall W, et al. A typology of predictive risk factors for non-adherent medication-related behaviors among chronic non-cancer pain patients prescribed opioids: a cohort study. *Pain Physician.* 2016;19:E421–34.
200. Santo T, Larance B, Bruno R, Gisev N, Nielsen S, Degenhardt L, et al. Correlates of indicators of potential extra-medical opioid use in people prescribed opioids for chronic non-cancer pain. *Drug Alcohol Rev.* 2020;39:128–34.
201. Substance Abuse and Mental Health Services Administration (SAMHSA). 2. Substance Use Disorders. Impact of the DSM-IV to DSM-5 Changes on the National Survey on Drug Use and Health [Internet]. 2022. Rockville, MD: SAMHSA; 2016.
202. World Health Organization (WHO). Annex 3, ICD-10 codes for conditions covered in these guidelines. Guidelines for the Psychosocially Assisted Pharmacological Treatment of Opioid Dependence Geneva, Switzerland: WHO; 2009.
203. Noble M, Tregear SJ, Treadwell JR, Schoelles K. Long-term opioid therapy for chronic noncancer pain: a systematic review and meta-analysis of efficacy and safety. *J Pain Symptom Manage.* 2008;35:214–28.
204. National Institute for Health and Care Excellence. Chronic pain (primary and secondary) in over 16s: assessment of all chronic pain and management of chronic primary pain 2021 [updated 7 April 2021; cited 2021 October]. Available at: <https://www.nice.org.uk/guidance/ng193/resources/chronic-pain-primary-and-secondary-in-over-16s-assessment-of-all-chronic-pain-and-management-of-chronic-primary-pain-pdf-66142080468421>
205. Dowell D, Ragan K, Jones C, Baldwin G, Chou R. CDC clinical practice guideline for prescribing opioids for pain—United States, 2022. *Recomm Rep.* 2022;71:1–95.
206. Häuser W, Morlion B, Vowles KE, Bannister K, Buchser E, Casale R, et al. European* clinical practice recommendations on opioids for chronic noncancer pain—part 1: role of opioids in the management of chronic noncancer pain. *Eur J Pain.* 2021;25:949–68.

SUPPORTING INFORMATION

Additional supporting information can be found online in the Supporting Information section at the end of this article.

How to cite this article: Thomas KH, Dalili MN, Cheng H-Y, Dawson S, Donnelly N, Higgins JPT, et al. Prevalence of problematic pharmaceutical opioid use in patients with chronic non-cancer pain: A systematic review and meta-analysis. *Addiction.* 2024. <https://doi.org/10.1111/add.16616>